

Tabellen volgens C.E. NORM (75%)
DIN 15019.2

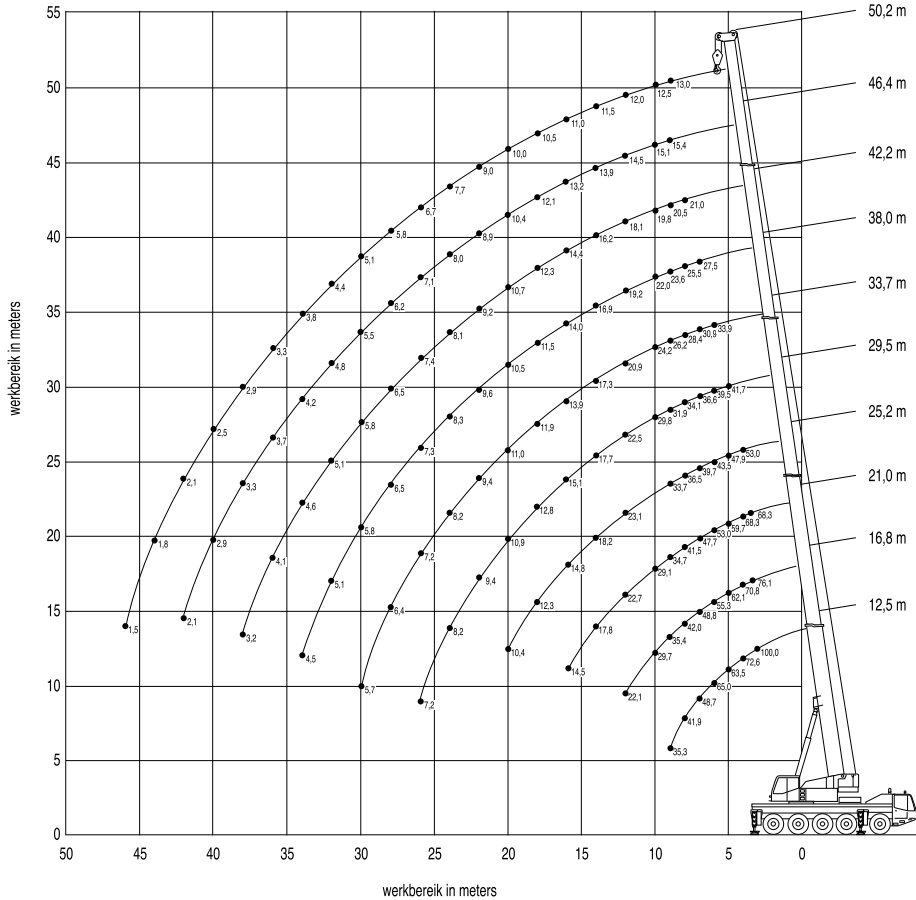
Standaardafmetingen
van de stempelschotten 2.5 x 1.2 m

Gewicht van hijsblokken

50.4 T	3 schijfs	700 kg
21.6 T	1 schijfs	550 kg
7.2 T	Wartel	250 kg

Toelaatbare reeptrek

Hijsdraad doorsnede	21 mm
Capaciteit	7.2 ton



Hijsvermogen (t) aan de hoofdgiek volledige stempelbasis 7.1 x 7.0 m.																													
Mastlengte in meters	Vlucht in meters																			Ballast 25 ton									
	3.0	3.5	4.0	4.5	5.0	6.0	7.0	8.0	9.0	10.0	12.0	14.0	16.0	18.0	20.0	22.0	24.0	26.0	28.0	30.0	32.0	34.0	36.0	38.0	40.0	42.0	44.0	46.0	
12.5	100*	79.2	73.7	68.8	64.2	56.2	49.0	42.0	36.5																				
16.8		76.2	70.8	66.2	62.2	55.3	49.1	42.1	36.6	30.7	22.9																		
21.0		73.0	68.3	63.8	59.8	53.1	47.8	41.6	35.9	30.1	23.5	18.5	15.0																
25.2			53.0	50.4	47.9	43.5	39.7	36.5	33.7	30.3	23.5	18.8	15.4	12.8	10.9														
29.5					41.7	39.5	36.6	34.1	31.9	30.0	23.4	18.3	15.1	13.3	11.3	9.8	8.5	7.5											
33.7						33.9	30.9	28.4	26.2	24.2	20.9	18.0	14.5	12.0	11.0	9.9	8.6	7.6	6.7	6.0									
38.0							27.5	25.5	23.6	22.0	19.2	16.9	14.6	12.0	10.5	9.6	8.7	7.7	6.8	6.1	5.4	4.8							
42.2								21.0	20.5	19.8	18.1	16.2	14.4	12.5	11.2	9.6	8.4	7.3	6.4	5.7	5.0	4.4	3.9	3.5					
46.4									15.4	15.1	14.5	13.9	13.2	12.1	10.8	9.3	8.0	7.0	6.1	5.3	4.6	4.0	3.5	3.1	2.6	2.3			
50.2										13.0	12.5	12.0	11.5	11.0	10.5	10.0	9.2	8.1	7.1	6.2	5.4	4.7	4.1	3.6	3.1	2.7	2.3	2.0	1.7

* over achterzijde

Hijsvermogen (t) aan de hoofdgiek volledige stempelbasis 7.1 x 7.0 m.																													
Mastlengte in meters	Vlucht in meters																			Ballast 32 ton									
	3.0	3.5	4.0	4.5	5.0	6.0	7.0	8.0	9.0	10.0	12.0	14.0	16.0	18.0	20.0	22.0	24.0	26.0	28.0	30.0	32.0	34.0	36.0	38.0	40.0	42.0	44.0	46.0	
12.5	100*	79.2	73.7	68.8	64.5	56.6	50.2	44.2	37.0																				
16.8		76.2	70.8	66.2	62.2	55.3	49.8	44.8	39.3	34.7	26.2																		
21.0		73.0	68.3	63.8	59.8	53.1	47.8	43.3	38.8	34.2	25.6	21.2	17.3																
25.2			53.0	50.4	47.9	43.5	39.7	36.5	33.7	31.2	25.7	20.6	17.6	14.8	12.6														
29.5					41.7	39.5	36.6	34.1	31.9	30.0	26.0	21.0	17.1	14.3	12.1	11.3	9.9	8.8											
33.7						33.9	30.9	28.4	26.2	24.2	20.9	18.4	16.2	14.0	11.8	10.3	9.6	8.8	7.9	7.1									
38.0							27.5	25.5	23.6	22.0	19.2	16.9	15.0	13.4	11.8	10.1	8.8	8.1	7.5	6.9	6.4	5.9							
42.2								21.0	20.5	19.8	18.1	16.2	14.4	13.0	11.8	10.6	9.5	8.6	7.6	6.8	6.1	5.5	4.9	4.4					
46.4									15.4	15.1	14.5	13.9	13.2	12.1	11.0	10.1	9.2	8.3	7.3	6.5	5.8	5.1	4.5	4.0	3.6	3.2			
50.2										13.0	12.5	12.0	11.5	11.0	10.5	10.0	9.2	8.5	7.8	7.2	6.6	5.8	5.2	4.6	4.1	3.6	3.2	2.9	2.6

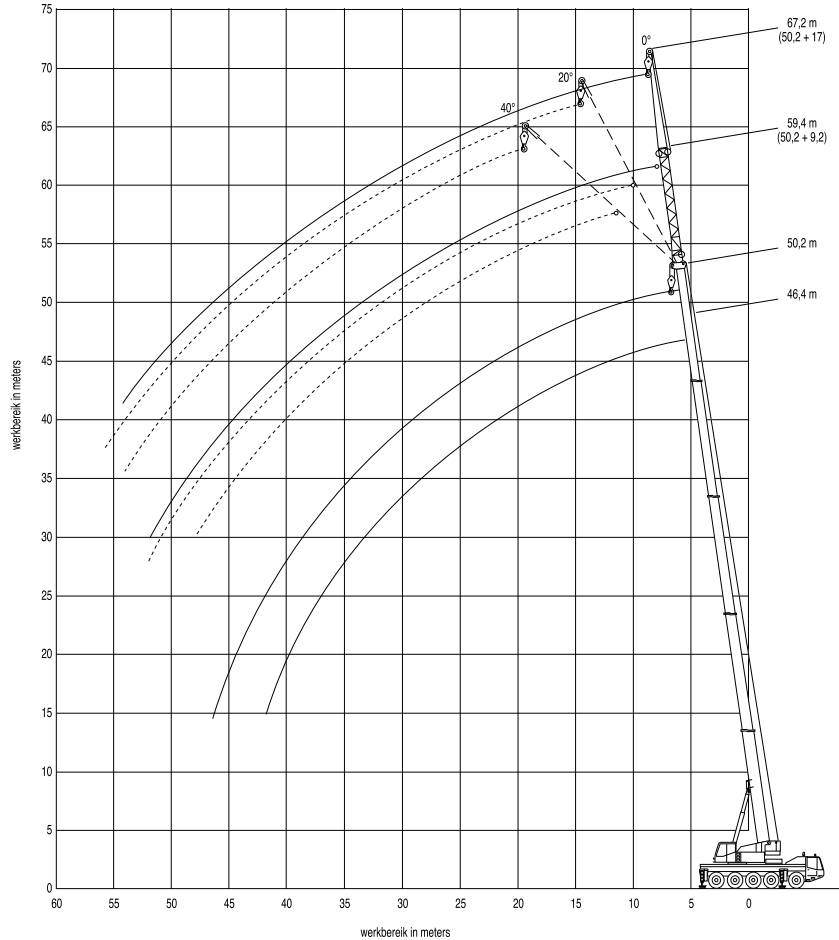
* over achterzijde

Hijswermogen (t) aan de hoofdgiek halve stempelbasis 7.1 x 4.5 m.

Mastlengte in meters	Vlucht in meters																Ballast 25 ton											
	3.0	3.5	4.0	4.5	5.0	6.0	7.0	8.0	9.0	10.0	12.0	14.0	16.0	18.0	20.0	22.0	24.0	26.0	28.0	30.0	32.0	34.0	36.0	38.0	40.0	42.0	44.0	46.0
12.5	78.9	71.2	64.8	59.4	53.7	38.3	29.3	23.5	19.5																			
16.8		71.3	64.9	59.5	53.1	38.4	29.4	23.6	19.5	16.5	12.3																	
21.0		70.9	63.7	54.9	48.1	39.2	30.1	24.2	20.1	17.0	12.8	10.0	8.0															
25.2			53.0	50.4	44.7	37.8	30.6	24.6	20.5	17.4	13.1	10.3	8.3	6.8	5.7													
29.5					41.7	34.8	29.2	24.7	21.1	17.9	13.6	10.7	8.7	7.2	6.1	5.2	4.4	3.8										
33.7						32.4	27.2	23.3	19.6	17.7	13.7	10.8	8.8	7.3	6.1	5.2	4.5	3.8	3.3	2.9								
38.0							25.9	22.3	19.4	17.8	13.8	11.0	8.9	7.4	6.3	5.3	4.6	3.9	3.4	3.0	2.6	2.3						
42.2								21.0	19.2	17.0	13.5	10.6	8.6	7.1	5.9	5.0	4.3	3.6	3.1	2.7	2.3	1.9	1.6	1.3				
46.4									15.4	15.1	13.2	10.3	8.3	6.8	5.7	4.7	4.0	3.4	2.8	2.4	2.0	1.6	1.3	1.0	0.7			
50.2										13.0	12.5	12.0	10.4	8.4	6.9	5.7	4.8	4.1	3.4	2.9	2.5	2.1	1.7	1.3	1.0	0.7		

Hijswermogen (t) aan de hoofdgiek halve stempelbasis 7.1 x 4.5 m.

Mastlengte in meters	Vlucht in meters																Ballast 32 ton													
	3.0	3.5	4.0	4.5	5.0	6.0	7.0	8.0	9.0	10.0	12.0	14.0	16.0	18.0	20.0	22.0	24.0	26.0	28.0	30.0	32.0	34.0	36.0	38.0	40.0	42.0	44.0	46.0		
12.5					66.1	60.6	55.9	45.2	34.9	28.1	23.4																			
16.8					66.2	60.7	56.0	45.4	35.0	28.2	23.4	19.9	15.0																	
21.0					65.8	60.3	55.6	44.7	35.6	28.8	24.0	20.4	15.5	12.2	9.9															
25.2					53.0	50.4	47.9	42.4	35.1	29.2	24.4	20.8	15.8	12.5	10.2	8.5	7.2													
29.5						41.7	39.5	34.5	28.7	23.9	21.3	16.3	13.0	10.6	8.9	7.6	6.5	5.6	4.9											
33.7							33.9	30.9	27.8	23.5	20.0	15.8	13.1	10.7	9.0	7.6	6.5	5.7	5.0	4.4	3.9									
38.0								27.5	25.5	23.3	20.0	15.9	13.2	10.9	9.1	7.7	6.7	5.8	5.0	4.4	3.9	3.5	3.1							
42.2									21.0	20.5	19.8	16.2	12.9	10.5	8.8	7.4	6.3	5.5	4.7	4.1	3.6	3.2	2.8	2.4	2.1					
46.4										15.4	15.1	14.5	12.6	10.2	8.5	7.1	6.1	5.2	4.5	3.9	3.3	2.9	2.5	2.2	1.8	1.5	1.3			
50.2											13.0	12.5	12.0	11.5	10.3	8.6	7.2	6.1	5.3	4.5	3.9	3.4	3.0	2.6	2.2	1.9	1.6	1.3	1.0	0.8



Hijswermogen (t) aan de hoofdgiek + 9.2 m. klapjib volledige stempelbasis 7.1 x 7.0 m.

Mastlengte in meters	Graden	Vlucht in meters																Ballast 25 ton									
		7.0	8.0	9.0	10.0	12.0	14.0	16.0	18.0	20.0	22.0	24.0	26.0	28.0	30.0	32.0	34.0	36.0	38.0	40.0	42.0	44.0	46.0	48.0	50.0	52.0	54.0
38.0 + 9.2 klapjib	0°	14.4	14.2	13.7	13.1	12.2	11.3	10.4	9.7	9.0	8.3	7.7	6.6	5.7	4.9	4.4	4.2	3.9	3.7	3.3	3.0						
	20°				9.3	8.9	8.6	8.3	8.0	7.7	7.5	7.1	6.8	6.1	5.2	4.5	3.9	3.7	3.6	3.4	3.0						
	40°						7.1	7.0	6.8	6.6	6.5	6.4	6.3	6.2	5.5	4.7	4.0										
42.2 + 9.2 klapjib	0°				11.7	11.3	10.7	10.0	9.3	8.7	8.1	7.5	7.0	6.5	5.9	5.1	4.6	4.3	3.8	3.3	2.9	2.6	2.2	1.9			
	20°					8.8	8.4	8.1	7.8	7.5	7.2	6.9	6.6	6.2	5.5	4.7	4.1	3.9	3.5	3.1	2.7	2.3	2.0				
	40°						7.1	6.9	6.7	6.5	6.4	6.2	6.0	5.9	5.7	4.9	4.3	3.9	3.6								
46.4 + 9.2 klapjib	0°				10.3	9.4	8.7	8.1	7.5	7.0	6.5	6.1	5.7	5.4	5.1	4.6	4.0	3.4	3.0	2.6	2.2	1.9	1.6	1.3	1.1		
	20°						7.1	6.8	6.5	6.2	5.8	5.5	5.2	5.0	4.7	4.5	4.2	3.7	3.2	2.8	2.4	2.0	1.7	1.4	1.1		
	40°							6.1	5.8	5.5	5.2	5.0	4.8	4.6	4.4	4.2	4.1	3.9	3.3	2.9	2.5						
50.2 + 9.2 klapjib	0°						8.4	7.9	7.5	7.1	6.7	6.3	6.0	5.7	5.4	5.0	4.5	3.9	3.4	2.9	2.5	2.1	1.8	1.5	1.2	1.0	0.8
	20°							6.9	6.4	6.1	5.7	5.4	5.2	4.9	4.7	4.5	4.3	4.1	3.7	3.2	2.7	2.3	2.0	1.7	1.4	1.1	0.9
	40°								5.5	5.2	5.0	4.8	4.6	4.4	4.2	4.1	4.0	3.8	3.3	2.9	2.5	2.1					

Hijswermogen (t) aan de hoofdgiek + 17.0 m. klapjib volledige stempelbasis 7.1 x 7.0 m.

Mastlengte in meters	Graden	Vlucht in meters																Ballast 25 ton									
		8.0	9.0	10.0	12.0	14.0	16.0	18.0	20.0	22.0	24.0	26.0	28.0	30.0	32.0	34.0	36.0	38.0	40.0	42.0	44.0	46.0	48.0	50.0	52.0	54.0	56.0
38.0 + 17.0 klapjib	0°	8.1	7.8	7.5	7.0	6.5	6.0	5.6	5.3	5.0	4.7	4.4	4.2	4.0	3.8	3.6	3.5	3.0	2.6	2.4	2.3	2.2	2.1	2.0			
	20°					4.8	4.6	4.3	4.1	3.9	3.7	3.6	3.4	3.3	3.2	3.1	3.1	3.0	3.0	2.5	2.2	2.1	2.1	2.0			
	40°						3.6	3.5	3.4	3.3	3.2	3.1	3.0	3.0	2.9	2.9	2.9	2.9	2.7								
42.2 + 17.0 klapjib	0°		7.2	7.0	6.5	6.1	5.7	5.3	5.0	4.7	4.5	4.2	4.0	3.8	3.7	3.5	3.4	3.1	2.8	2.7	2.4	2.1	1.9	1.6	1.4	1.2	
	20°						4.5	4.3	4.1	3.9	3.7	3.6	3.4	3.3	3.2	3.1	3.1	3.1	2.7	2.5	2.4	2.1	1.8	1.5			
	40°							3.4	3.3	3.2	3.1	3.0	2.9	2.8	2.8	2.8	2.8	2.8	2.8	2.5	2.1						
46.4 + 17.0 klapjib	0°				6.2	5.8	5.5	5.2	4.9	4.7	4.4	4.2	4.0	3.8	3.6	3.5	3.3	3.2	2.8	2.4	2.1	1.8	1.5	1.3	1.0	0.8	0.6
	20°							4.1	4.0	3.8	3.6	3.5	3.3	3.2	3.0	2.9	2.8	2.7	2.6	2.6	2.4	2.1	1.8	1.5	1.2	1.0	0.8
	40°								3.2	3.1	3.1	3.0	3.0	2.9	2.9	2.8	2.7	2.6	2.5	2.5	2.3	1.9					
50.2 + 17.0 klapjib	0°				5.6	5.4	5.2	5.0	4.8	4.6	4.4	4.2	4.0	3.8	3.6	3.4	3.2	3.0	2.7	2.3	2.0	1.7	1.4	1.2	0.9	0.7	
	20°							4.1	3.9	3.8	3.6	3.4	3.3	3.1	3.0	2.9	2.8	2.7	2.6	2.5	2.4	2.0	1.7	1.4	1.2	0.9	0.7
	40°								3.2	3.1	3.0	2.9	2.9	2.8	2.7	2.7	2.6	2.5	2.5	2.4	2.3	1.9	1.6	1.3			

Hijswermogen (t) aan de hoofdgiek + 9.2 m. klapjib halve stempelbasis 7.1 x 4.5 m.

Mastlengte in meters	Graden	Vlucht in meters																Ballast 25 ton									
		7.0	8.0	9.0	10.0	12.0	14.0	16.0	18.0	20.0	22.0	24.0	26.0	28.0	30.0	32.0	34.0	36.0	38.0	40.0	42.0	44.0	46.0	48.0	50.0	52.0	54.0
38.0 + 9.2 klapjib	0°	14.4	14.2	13.7	13.1	12.2	10.0	8.0	6.9	6.3	5.3	4.6	3.9	3.4	2.9	2.5	2.2	1.9	1.6	1.3	1.0						
	20°				9.3	8.9	8.6	8.3	7.1	5.8	5.2	4.9	4.2	3.6	3.1	2.7	2.3	2.0	1.7	1.4	1.1						
	40°						7.1	7.0	6.8	6.2	5.2	4.8	4.4	3.8	3.2	2.8	2.4										
42.2 + 9.2 klapjib	0°				11.7	11.3	10.7	10.0	8.2	7.1	6.0	5.0	4.2	3.6	3.1	2.6	2.2	1.8	1.5	1.2	0.9	0.6	0.6				
	20°					8.8	8.4	8.1	7.3	6.0	5.4	4.6	3.9	3.3	2.8	2.4	2.1	1.7	1.3	1.0	0.8						
	40°						7.1	6.9	6.7	6.4	5.4	4.9	4.1	3.5	3.0	2.6	2.2	1.8	1.4								
46.4 + 9.2 klapjib	0°				10.3	9.4	8.7	8.1	6.8	5.7	4.7	4.0	3.3	2.8	2.3	1.9	1.5	1.1	0.8								
	20°						7.1	6.8	6.5	6.2	5.2	4.3	3.7	3.1	2.6	2.2	1.8	1.4	1.0	0.7							
	40°							6.1	5.8	5.5	5.2	4.6	3.9	3.3	2.8	2.4	2.0	1.6	1.2	0.8							
50.2 + 9.2 klapjib	0°				8.4	7.9	7.5	6.8	5.6	4.7	3.9	3.3	2.8	2.3	1.9	1.4	1.1	0.8									
	20°						6.9	6.4	6.1	5.7	5.1	4.3	3.6	3.1	2.6	2.2	1.7	1.4	1.0	0.7							
	40°							5.5	5.2	5.0	4.6	3.9	3.3	2.8	2.3	1.9	1.5	1.2	0.8								

Hijsvermogen (t) aan de hoofdgiek + 9.2 m. klapjib volledige stempelbasis 7.1 x 7.0 m.

Mastlengte in meters	Graden	Vlucht in meters																	Ballast 32 ton														
		7.0	8.0	9.0	10.0	12.0	14.0	16.0	18.0	20.0	22.0	24.0	26.0	28.0	30.0	32.0	34.0	36.0	38.0	40.0	42.0	44.0	46.0	48.0	50.0	52.0	54.0						
38.0 + 9.2 klapjib	0°	14.4	14.2	13.7	13.1	12.2	11.3	10.4	9.7	9.0	8.3	7.7	7.1	6.5	5.9	5.3	4.6	4.1	3.7	3.6	3.4												
	20°				9.3	8.9	8.6	8.3	8.0	7.7	7.5	7.1	6.8	6.4	6.0	5.5	4.9	4.3	3.7	3.5	3.4												
	40°						7.1	7.0	6.8	6.6	6.5	6.4	6.3	6.2	6.1	5.8	5.0																
42.2 + 9.2 klapjib	0°			11.7	11.3	10.7	10.0	9.3	8.7	8.1	7.5	7.0	6.5	6.0	5.6	5.2	4.8	4.3	3.9	3.7	3.4	3.0	2.7										
	20°				8.8	8.4	8.1	7.8	7.5	7.2	6.9	6.6	6.2	5.9	5.5	5.1	4.5	4.0	3.7	3.5	3.1	2.8											
	40°					7.1	6.9	6.7	6.5	6.4	6.2	6.0	5.9	5.7	5.5	5.3	4.6	4.1															
46.4 + 9.2 klapjib	0°			10.3	9.4	8.7	8.1	7.5	7.0	6.5	6.1	5.7	5.4	5.1	4.8	4.5	4.2	3.9	3.5	3.1	2.7	2.4	2.1	1.8									
	20°				7.1	6.8	6.5	6.2	5.8	5.5	5.2	5.0	4.7	4.5	4.2	4.0	3.8	3.6	3.2	2.8	2.5	2.2	1.9										
	40°					6.1	5.8	5.5	5.2	5.0	4.8	4.6	4.4	4.2	4.1	3.9	3.8	3.6	3.3														
50.2 + 9.2 klapjib	0°				8.4	7.9	7.5	7.1	6.7	6.3	6.0	5.7	5.4	5.0	4.7	4.4	4.1	3.8	3.4	3.0	2.6	2.3	2.0	1.7	1.5	1.3							
	20°					6.9	6.4	6.1	5.7	5.4	5.2	4.9	4.7	4.5	4.3	4.1	3.9	3.7	3.5	3.2	2.8	2.4	2.1	1.8	1.6								
	40°						5.5	5.2	5.0	4.8	4.6	4.4	4.2	4.1	4.0	3.8	3.7	3.5	3.3	2.9													

Hijsvermogen (t) aan de hoofdgiek + 17.0 m. klapjib volledige stempelbasis 7.1 x 7.0 m.

Mastlengte in meters	Graden	Vlucht in meters																	Ballast 32 ton														
		8.0	9.0	10.0	12.0	14.0	16.0	18.0	20.0	22.0	24.0	26.0	28.0	30.0	32.0	34.0	36.0	38.0	40.0	42.0	44.0	46.0	48.0	50.0	52.0	54.0	56.0	58.0	60.0	62.0			
38.0 + 17.0 klapjib	0°		8.1	7.8	7.5	7.0	6.5	6.0	5.6	5.3	5.0	4.7	4.4	4.2	4.0	3.8	3.6	3.5	3.3	3.2	3.0	2.7	2.4	2.1	2.0								
	20°				4.8	4.6	4.3	4.1	3.9	3.7	3.6	3.4	3.3	3.2	3.1	3.1	3.0	3.0	2.9	2.8	2.6	2.2	1.9										
	40°						3.6	3.5	3.4	3.3	3.2	3.1	3.0	3.0	2.9	2.9	2.9	2.9	2.8														
42.2 + 17.0 klapjib	0°		7.2	7.0	6.5	6.1	5.7	5.3	5.0	4.7	4.5	4.2	4.0	3.8	3.7	3.5	3.4	3.2	3.1	3.0	2.8	2.5	2.3	2.2	2.1	1.9							
	20°				4.5	4.3	4.1	3.9	3.7	3.6	3.4	3.3	3.2	3.1	3.1	3.1	3.1	3.1	3.1	3.1	2.7	2.4	2.2	2.2									
	40°						3.4	3.3	3.2	3.1	3.1	3.0	2.9	2.9	2.8	2.8	2.8	2.8	2.8	2.8	2.8	2.8	2.8										
46.4 + 17.0 klapjib	0°				6.2	5.8	5.5	5.2	4.9	4.7	4.4	4.2	4.0	3.8	3.6	3.5	3.3	3.2	3.1	2.9	2.8	2.6	2.3	2.0	1.7	1.5	1.3	1.1					
	20°						4.1	4.0	3.8	3.6	3.5	3.3	3.2	3.0	2.9	2.8	2.7	2.6	2.6	2.5	2.5	2.4	2.2	1.9	1.7	1.4							
	40°							3.2	3.1	3.1	3.0	3.0	2.9	2.9	2.8	2.7	2.6	2.5	2.5	2.4	2.4												
50.2 + 17.0 klapjib	0°				5.6	5.4	5.2	5.0	4.8	4.6	4.4	4.2	4.0	3.8	3.6	3.4	3.2	3.0	2.8	2.7	2.5	2.4	2.2	1.9	1.6	1.4	1.2	1.0	0.8	0.7			
	20°						4.1	3.9	3.8	3.6	3.4	3.3	3.1	3.0	2.9	2.8	2.7	2.6	2.5	2.4	2.3	2.2	1.9	1.6	1.4								
	40°							3.2	3.1	3.0	2.9	2.9	2.8	2.7	2.7	2.6	2.5	2.5	2.4	2.3	2.2	2.2	2.0										

Hijswermogen (t) aan de hoofdgiek + 9.2 m. klabjib halve stempelbasis 7.1 x 4.5 m.

Mastlengte in meters	Graden	Vlucht in meters																Ballast 32 ton										
		7.0	8.0	9.0	10.0	12.0	14.0	16.0	18.0	20.0	22.0	24.0	26.0	28.0	30.0	32.0	34.0	36.0	38.0	40.0	42.0	44.0	46.0	48.0	50.0	52.0	54.0	
38.0 + 9.2 klabjib	0°	14.4	14.2	13.7	13.1	12.2	11.3	9.9	8.2	6.8	5.9	5.6	5.0	4.4	3.9	3.4	3.0	2.6	2.3	2.1	1.8							
	20°			9.3	8.9	8.6	8.3	8.0	7.3	6.2	5.2	4.5	3.8	3.2	2.8	2.3	1.9	1.5	1.1	0.8								
	40°					7.1	7.0	6.8	6.6	6.5	5.5	4.7	4.4	4.2	3.7	3.2												
42.2 + 9.2 klabjib	0°			11.7	11.3	10.7	10.0	9.3	8.3	7.0	6.2	5.4	4.7	4.1	3.6	3.1	2.7	2.3	2.0	1.7	1.4	1.2	0.9					
	20°				8.8	8.4	8.1	7.8	7.5	6.3	5.4	5.0	4.4	3.8	3.3	2.9	2.5	2.2	1.9	1.5	1.3	1.0						
	40°					7.1	6.9	6.7	6.5	6.4	5.7	4.9	4.5	4.0	3.4	3.0	2.6	2.2										
46.4 + 9.2 klabjib	0°				10.3	9.4	8.7	8.1	7.5	7.0	6.1	5.2	4.4	3.8	3.3	2.8	2.4	2.1	1.7	1.4	1.1	0.8	0.7					
	20°					7.1	6.8	6.5	6.2	5.8	5.5	4.8	4.1	3.6	3.1	2.6	2.3	1.9	1.6	1.2	1.0	0.7	0.7					
	40°						6.1	5.8	5.5	5.2	5.0	4.8	4.3	3.7	3.2	2.8	2.4	2.0	1.7	1.3								
50.2 + 9.2 klabjib	0°					8.4	7.9	7.5	7.1	6.7	6.0	5.1	4.4	3.8	3.2	2.8	2.4	2.0	1.6	1.3	1.0	0.7						
	20°					6.9	6.4	6.1	5.7	5.4	5.2	4.7	4.1	3.5	3.0	2.6	2.2	1.9	1.5	1.2	0.9	0.7						
	40°						5.5	5.2	5.0	4.8	4.6	4.3	3.7	3.2	2.8	2.4	2.0	1.7	1.3	1.0								

Hijswermogen (t) aan de hoofdgiek + 17.0 m. klabjib halve stempelbasis 7.1 x 4.5 m.

Mastlengte in meters	Graden	Vlucht in meters																Ballast 32 ton										
		7.0	8.0	9.0	10.0	12.0	14.0	16.0	18.0	20.0	22.0	24.0	26.0	28.0	30.0	32.0	34.0	36.0	38.0	40.0	42.0	44.0	46.0	48.0	50.0	52.0	54.0	
38.0 + 17.0 klabjib	0°		8.1	7.8	7.5	7.0	6.5	6.0	5.6	5.3	5.0	4.7	4.4	3.8	3.3	2.8	2.4	2.1	1.7	1.4	1.1	0.8						
	20°					4.8	4.6	4.3	4.1	3.9	3.7	3.6	3.4	3.3	3.2	2.8	2.7	2.6	2.4	2.2	1.9	1.7	1.4	1.2				
	40°						3.6	3.5	3.4	3.3	3.2	3.1	3.0	3.0	2.9	2.7	2.3	1.9	1.6									
42.2 + 17.0 klabjib	0°			7.2	7.0	6.5	6.1	5.7	5.3	5.0	4.7	4.5	4.2	3.9	3.7	3.3	2.9	2.5	2.2	1.9	1.6	1.4	1.1	0.9	0.7	0.7		
	20°					4.5	4.3	4.1	3.9	3.7	3.6	3.4	3.3	3.2	3.0	2.8	2.5	2.2	1.9	1.6	1.4	1.1	0.9	0.6				
	40°						3.4	3.3	3.2	3.1	3.1	3.0	2.9	2.9	2.8	2.7	2.4	2.1	1.8	1.5								
46.4 + 17.0 klabjib	0°					6.2	5.8	5.5	5.2	4.9	4.7	4.4	4.2	4.0	3.5	3.0	2.6	2.2	1.9	1.6	1.3	1.0	0.8					
	20°						4.1	4.0	3.8	3.6	3.5	3.3	3.2	3.0	2.9	2.6	2.3	2.0	1.7	1.3	1.1	0.8						
	40°							3.2	3.1	3.1	3.0	3.0	2.9	2.9	2.8	2.5	2.2	1.9	1.6	1.3	1.0							
50.2 + 17.0 klabjib	0°					5.6	5.4	5.2	5.0	4.8	4.6	4.4	4.2	3.9	3.4	2.9	2.5	2.2	1.8	1.5	1.2	0.9	0.7					
	20°						4.1	3.9	3.8	3.6	3.4	3.3	3.1	3.0	2.9	2.6	2.2	1.9	1.6	1.3	1.0	0.8						
	40°							3.2	3.1	3.0	2.9	2.9	2.8	2.7	2.7	2.5	2.2	1.9	1.5	1.2	0.9	0.7						