

Tabellen volgens NEN 2022 (75%)

Kraangroep 3 volgens NEN 2018

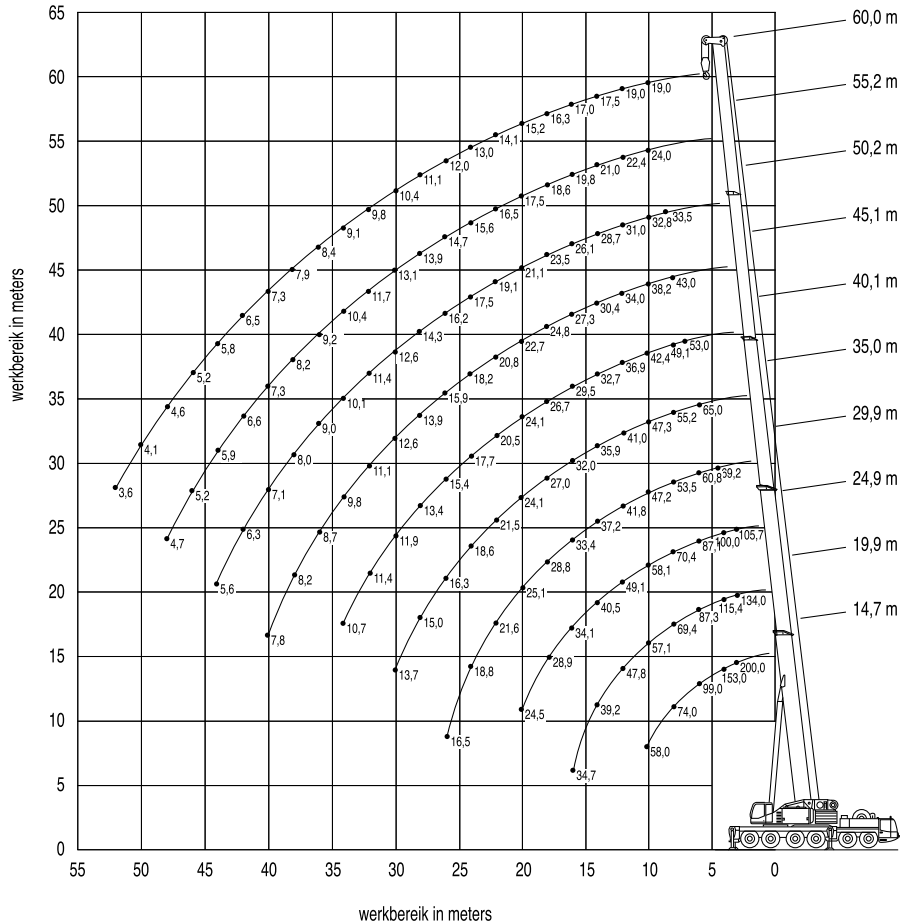
Standaardafmetingen  
van de stempelschotten 3.0 x 2.5 m

#### Gewicht van hijsblokken

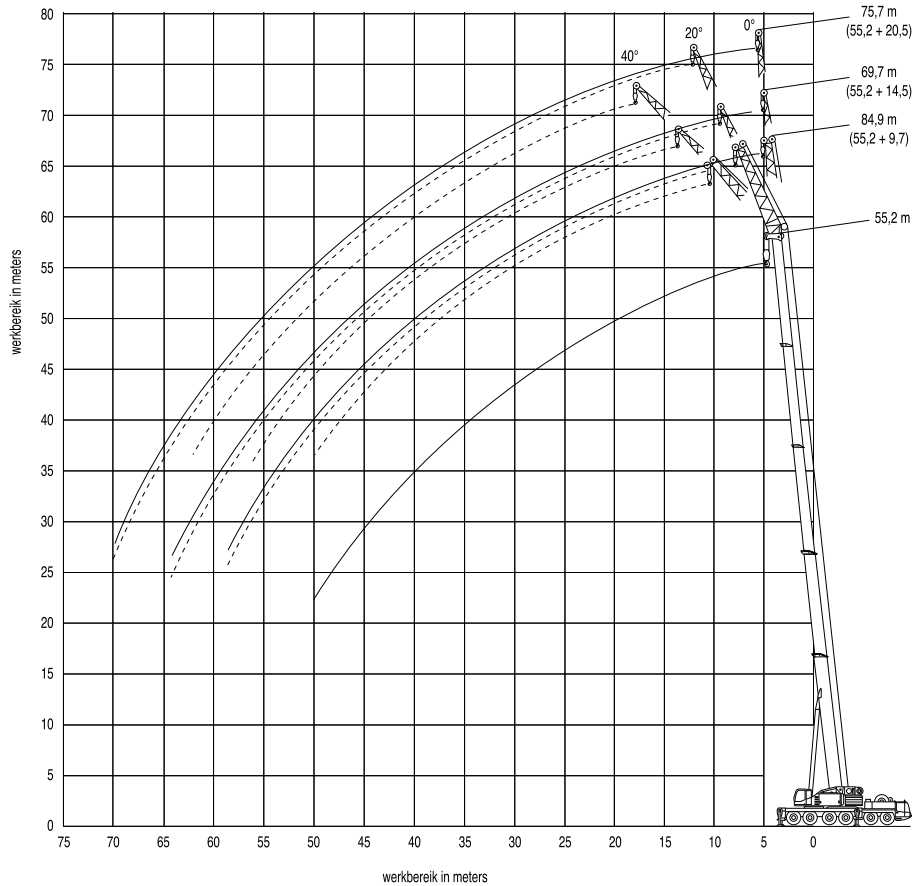
97 T	5 schijfs	1.200 kg
63 T	3 schijfs	1.050 kg
28 T	1 schijfs	750 kg
9.3 T	Wartel	500 kg

#### Toelaatbare reeptrek

Hijsdraad doorsnede	19 mm
Capaciteit	9.3 ton







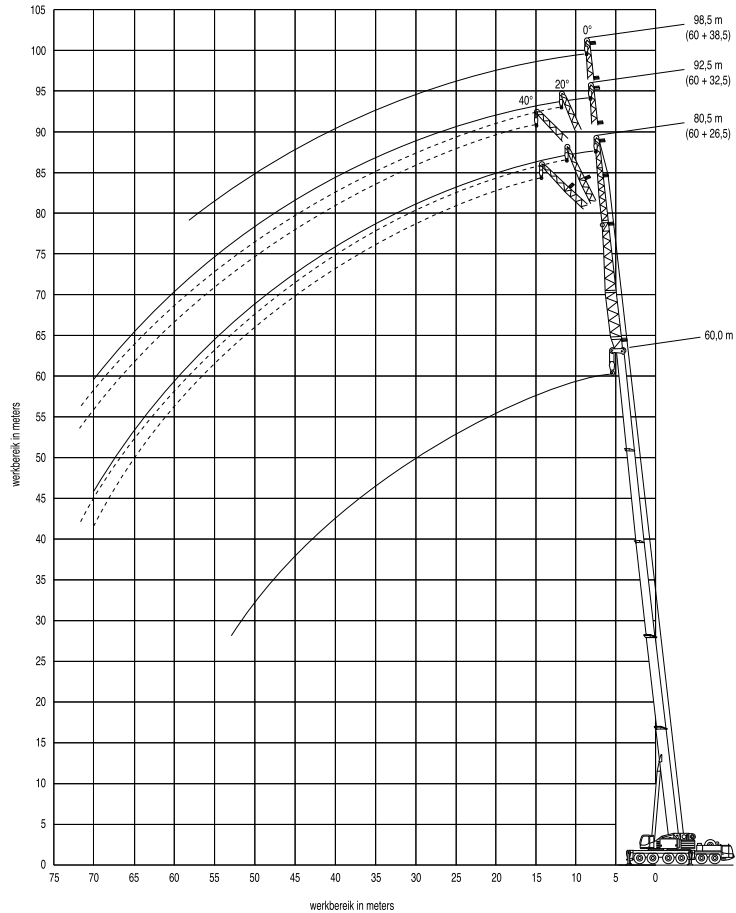


**Hijsvermogen (t) aan de hoofdgiek + 20.5 m. klapjib volledige stempelbasis 7.9 x 7.5 m.**

Mastlengte in meters	Graden	Vlucht in meters																				Ballast 64 ton									
		12.0	14.0	16.0	18.0	20.0	22.0	24.0	26.0	28.0	30.0	32.0	34.0	36.0	38.0	40.0	42.0	44.0	46.0	48.0	50.0	52.0	54.0	56.0	58.0	60.0	62.0	64.0	66.0	68.0	70.0
55.2 + 20.5 klapjib	0°	8.4	8.2	7.9	7.7	7.5	7.2	7.0	6.8	6.7	6.5	6.3	6.1	6.0	5.8	5.6	5.5	5.3	5.2	5.0	4.7	4.2	3.7	3.3	2.9	2.6	2.2	1.9	1.6	1.4	1.1
	20°					7.0	6.8	6.6	6.4	6.2	6.0	5.9	5.7	5.5	5.3	5.2	5.0	4.0.8	4.7	4.6	4.4	4.3	4.2	3.8	3.4	3.0	2.6	2.2	1.9	1.6	1.3
	40°								5.7	5.7	5.6	5.6	5.5	5.4	5.2	5.1	4.9	4.8	4.7	4.5	4.4	4.3	4.2	4.2	4.1	3.7	3.2	2.8			
60.0 + 20.5 klapjib	0°	6.8	6.6	6.4	6.3	6.1	5.9	5.8	5.7	5.5	5.4	5.3	5.2	5.0	4.9	4.8	4.6	4.5	4.3	4.1	3.9	3.7	3.4	3.1	2.8	2.4	2.1	1.7	1.5		
	20°					5.7	5.7	5.5	5.3	5.1	4.9	4.8	4.6	4.5	4.4	4.2	4.1	3.9	3.8	3.6	3.4	3.1	2.9	2.6	2.4	2.1	1.9	1.7	1.6	1.5	1.2
	40°							5.1	5.1	4.9	4.7	4.6	4.4	4.3	4.1	3.9	3.8	3.6	3.4	3.3	3.1	2.9	2.7	2.5	2.4	2.2	2.1	2.1	2.0		

**Hijsvermogen (t) aan de hoofdgiek + 20.5 m. klapjib halve stempelbasis 7.9 x 4.9 m.**

Mastlengte in meters	Graden	Vlucht in meters																	Ballast 33 ton											
		12.0	14.0	16.0	18.0	20.0	22.0	24.0	26.0	28.0	30.0	32.0	34.0	36.0	38.0	40.0	42.0	44.0												
55.2 + 20.5 klapjib	0°	8.4	8.2	7.9	7.7	7.5	6.2	5.0	4.0	3.1	2.4	1.8	1.2																	
	20°					7.0	6.8	6.6	5.8	4.7	3.9	3.2	2.5	1.9	1.3															
	40°						5.7	5.7	5.6	5.0	4.3	3.6	2.9	2.3	1.8	1.3														
60.0 + 20.5 klapjib	0°	6.8	6.6	6.4	6.3	6.1	5.7	4.6	3.6	2.7	2.0																			
	20°					5.8	5.7	5.5	5.3	4.4	3.5	2.8	2.1	1.6	1.1															
	40°						5.1	5.1	4.9	4.7	4.0	3.3	2.6	2.0	1.5	1.0														



**Hijswermogen (t) aan de hoofdgiek + starre jib 26.5 m. volledige stempelbasis 7.9 x 7.5 m.**

Mastlengte in meters	Graden	Vlucht in meters																				Ballast 64 ton													
		14.0	16.0	18.0	20.0	22.0	24.0	26.0	28.0	30.0	32.0	34.0	36.0	38.0	40.0	42.0	44.0	46.0	48.0	50.0	52.0	54.0	56.0	58.0	60.0	62.0	64.0	66.0	68.0	70.0	72.0	74.0	76.0		
55.2 + 26.5 starre jib	0°	5.9	5.8	5.7	5.5	5.4	5.2	5.0	4.9	4.7	4.5	4.4	4.2	4.0	3.9	3.8	3.7	3.5	3.5	3.4	3.3	3.3	3.2	3.2	2.8	2.5	2.2	1.9	1.6	1.3					
	20°		5.0	4.9	4.7	4.6	4.4	4.3	4.2	4.1	4.0	3.9	3.8	3.7	3.6	3.5	3.4	3.4	3.3	3.3	3.2	3.2	3.1	3.1	2.7	2.4	2.0	1.7	1.5						
	40°			3.9	3.9	3.8	3.8	3.7	3.6	3.6	3.5	3.5	3.4	3.4	3.4	3.3	3.3	3.2	3.2	3.2	3.2	3.1	3.1	3.1	2.8	2.4	2.1								
60.0 + 26.5 starre jib	0°	4.5	4.5	4.5	4.5	4.5	4.4	4.3	4.3	4.2	4.1	3.9	3.8	3.7	3.6	3.5	3.4	3.4	3.3	3.3	3.2	3.1	3.1	3.0	2.8	2.7	2.6	2.4	2.3	2.1	2.0	1.8	1.6	1.3	
	20°			4.4	4.2	4.1	3.9	3.8	3.7	3.6	3.6	3.5	3.4	3.4	3.3	3.3	3.2	3.1	3.1	3.0	2.9	2.8	2.7	2.6	2.4	2.3	2.1	2.0	1.8	1.6	1.3				
	40°				3.7	3.6	3.5	3.5	3.4	3.4	3.4	3.3	3.3	3.3	3.2	3.2	3.2	3.1	3.1	3.0	2.9	2.8	2.8	2.7	2.6	2.4	2.2	2.0	1.7	1.4					

**Hijswermogen (t) aan de hoofdgiek + starre jib 32.5 m. volledige stempelbasis 7.9 x 7.5 m.**

Mastlengte in meters	Graden	Vlucht in meters																				Ballast 64 ton												
		14.0	16.0	18.0	20.0	22.0	24.0	26.0	28.0	30.0	32.0	34.0	36.0	38.0	40.0	42.0	44.0	46.0	48.0	50.0	52.0	54.0	56.0	58.0	60.0	62.0	64.0	66.0	68.0	70.0	72.0	74.0	76.0	
55.2 + 32.5 starre jib	0°	4.3	4.2	4.1	4.1	4.0	3.9	3.8	3.7	3.6	3.6	3.5	3.4	3.3	3.2	3.1	3.0	2.9	2.9	2.8	2.7	2.7	2.6	2.6	2.5	2.2	2.1	2.1	2.0	1.8	1.5	1.3	1.0	
	20°			3.9	3.9	3.8	3.7	3.7	3.6	3.5	3.4	3.3	3.2	3.1	3.0	2.9	2.8	2.7	2.6	2.5	2.5	2.4	2.3	2.3	2.2	2.2	2.1	2.1	2.1	1.9	1.6			
	40°				3.3	3.3	3.2	3.1	3.0	3.0	2.9	2.8	2.7	2.7	2.6	2.5	2.5	2.4	2.4	2.3	2.3	2.2	2.2	2.2	2.1	2.1	2.1	1.9	1.6					
60.0 + 32.5 starre jib	0°	3.5	3.5	3.4	3.3	3.3	3.2	3.1	3.0	2.9	2.8	2.8	2.7	2.6	2.5	2.4	2.3	2.3	2.2	2.1	2.1	2.0	2.0	2.0	1.9	1.9	1.8	1.7	1.4	1.2				
	20°				3.6	3.4	3.3	3.2	3.1	3.0	2.9	2.8	2.7	2.6	2.5	2.5	2.4	2.3	2.2	2.1	2.1	2.0	1.9	1.9	1.8	1.7	1.7	1.6	1.5	1.4				
	40°					3.1	3.0	2.8	2.7	2.6	2.5	2.5	2.4	2.3	2.2	2.2	2.1	2.1	2.0	1.9	1.9	1.8	1.8	1.7	1.6	1.6	1.5	1.5	1.4	1.3				

**Hijswermogen (t) aan de hoofdgiek + starre jib 38.5 m. volledige stempelbasis 7.9 x 7.5 m.**

Mastlengte in meters	Graden	Vlucht in meters																				Ballast 64 ton											
		14.0	16.0	18.0	20.0	22.0	24.0	26.0	28.0	30.0	32.0	34.0	36.0	38.0	40.0	42.0	44.0	46.0	48.0	50.0	52.0	54.0	56.0	58.0	60.0	62.0	64.0	66.0	68.0	70.0	72.0	74.0	76.0
55.2 + 38.5 starre jib	0°	3.3	3.2	3.1	2.9	2.8	2.8	2.7	2.6	2.5	2.4	2.3	2.3	2.2	2.1	2.1	2.0	2.0	1.9	1.9	1.8	1.8	1.8	1.7	1.7	1.6	1.6	1.5	1.4	1.3	1.3	1.1	
	20°			2.9	2.9	2.8	2.7	2.6	2.5	2.4	2.4	2.3	2.2	2.1	2.1	2.0	1.9	1.8	1.8	1.7	1.7	1.6	1.6	1.5	1.5	1.4	1.4	1.4	1.4	1.3	1.3	1.1	
	40°				2.6	2.5	2.4	2.3	2.2	2.1	2.0	2.0	1.9	1.8	1.8	1.7	1.7	1.6	1.6	1.5	1.5	1.5	1.4	1.4	1.4	1.4	1.4	1.4	1.3	1.3	1.1		
60.0 + 38.5	0°		2.3	2.2	2.1	2.0	1.9	1.8	1.7	1.6	1.6	1.5	1.5	1.4	1.4	1.3	1.3	1.3	1.2	1.2	1.2	1.1	1.1	1.0									