

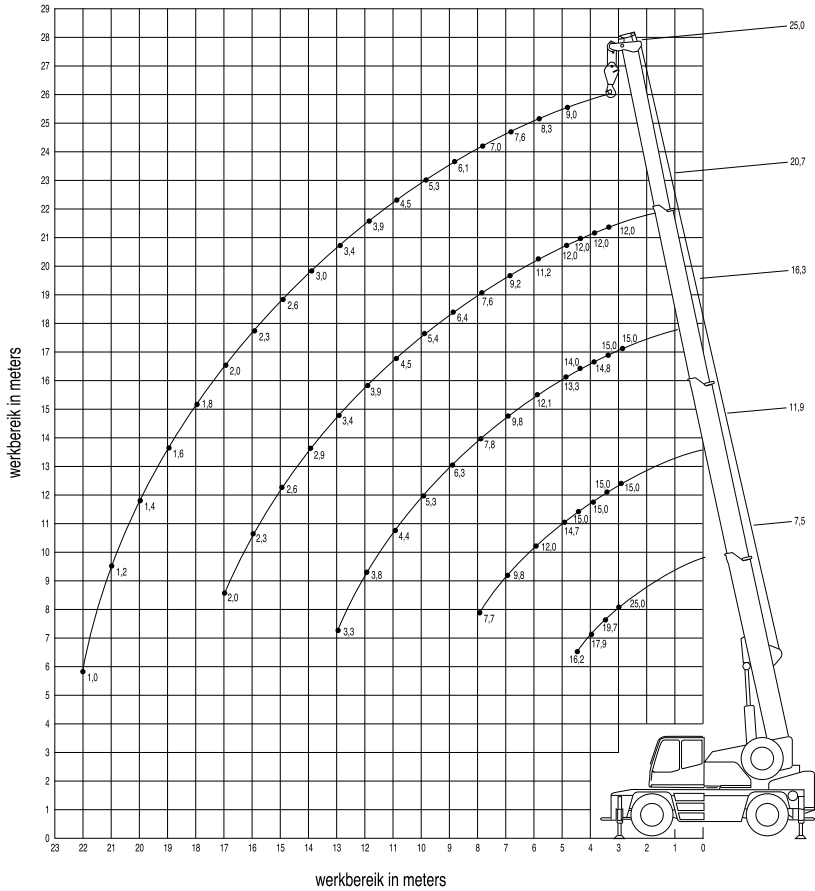
Tabellen volgens C.E. NORM (75%)  
DIN 15019.2

#### Gewicht van hijsblokken

25 T	3 schijfs	160 kg
3.2 T	Balgewicht	80 kg

#### Toelaatbare reeptrek

Hijsdraad doorsnede	16 mm
Capaciteit	2.9 ton



**Hijsvermogen (t) aan de hoofdgiek volledige stempelbasis 5.95 x 5.9 m.**

Mastlengte in meters	Vlucht in meters																					
	3.0	3.5	4.0	4.5	5.0	6.0	7.0	8.0	9.0	10.0	11.0	12.0	13.0	14.0	15.0	16.0	17.0	18.0	19.0	20.0	21.0	22.0
7.5	25.0*	19.7	17.9	16.2																		
11.9	15.0	15.0	15.0	15.0	14.7	12.0	9.8	7.7	6.2													
16.3	15.0	15.0	14.8	14.0	13.3	12.1	9.8	7.8	6.3	5.3	4.4	3.8	3.3									
20.7		12.0	12.0	12.0	12.0	11.2	9.2	7.6	6.4	5.4	4.5	3.9	3.4	2.9	2.6	2.3	2.0					
25.0					9.0	8.3	7.6	7.0	6.1	5.3	4.5	3.9	3.4	3.0	2.6	2.3	2.0	1.8	1.6	1.4	1.2	1.0

\* over achterzijde

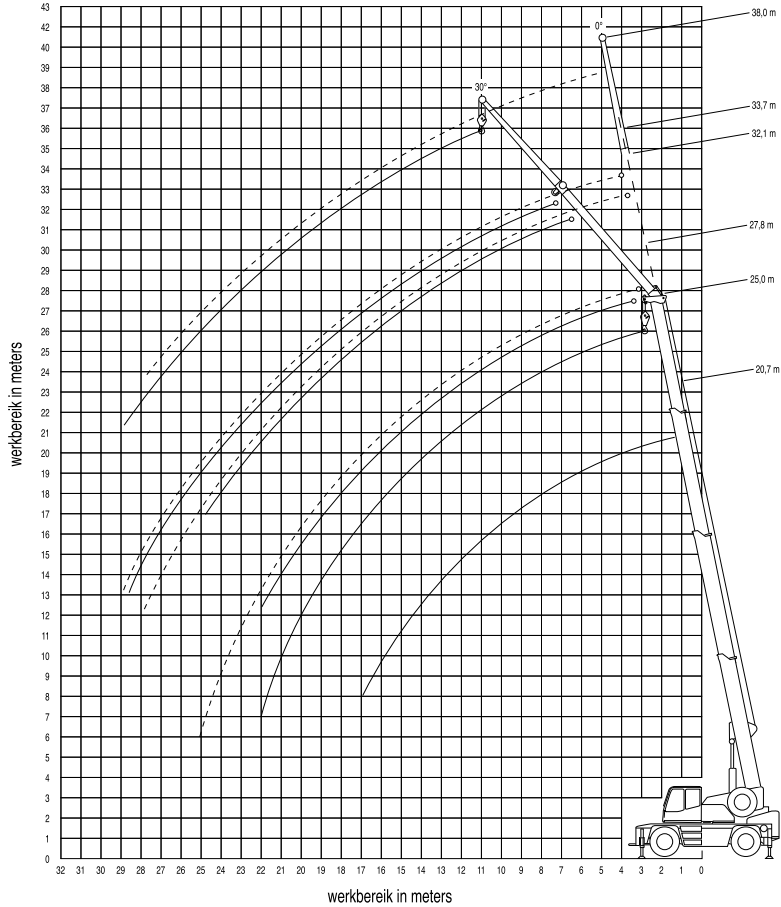
**Hijsvermogen (t) aan de hoofdgiek halve stempelbasis 5.95 x 4.0 m.**

Mastlengte in meters	Vlucht in meters																					
	3.0	3.5	4.0	4.5	5.0	6.0	7.0	8.0	9.0	10.0	11.0	12.0	13.0	14.0	15.0	16.0	17.0	18.0	19.0	20.0	21.0	22.0
7.5	19.1	17.1	13.8	10.8																		
11.9	15.0	15.0	13.6	11.1	9.1	6.5	4.9	3.9	3.1													
16.3	15.0	14.3	12.0	10.3	9.0	6.6	5.0	4.0	3.3	2.7	2.3	1.9	1.6									
20.7		12.0	10.8	9.4	8.3	6.6	5.2	4.1	3.3	2.8	2.3	2.0	1.7	1.5	1.2	1.0	0.8					
25.0					7.6	6.1	5.0	4.1	3.4	2.8	2.4	2.0	1.7	1.5	1.3	1.1	1.0	0.8	0.7	0.6	0.5	

**Hijsvermogen (t) aan de hoofdgiek speciale stempelbasis 5.95 x 2.25 m.**

Mastlengte in meters	Vlucht in meters																					
	3.0	3.5	4.0	4.5	5.0	6.0	7.0	8.0	9.0	10.0	11.0	12.0	13.0	14.0	15.0	16.0	17.0	18.0	19.0	20.0	21.0	22.0
7.5	9.8*	8.8*	7.9*	7.2*																		
7.5	9.3	7.1	5.6	4.6																		
11.9	10.0*	9.0*	8.1*	7.4*	6.7*	5.6*	4.3*	3.4*	2.8*													
11.9	9.7	7.4	5.9	4.9	4.1	3.0	2.3	1.8														
16.3	10.1*	9.1*	8.2*	7.5*	6.8*	5.7*	4.4*	3.5*	2.9*	2.4*	2.0*	1.7*	1.4*									
16.3	8.7	7.3	6.0	5.0	4.2	3.1	2.4	1.9	1.5	1.2	1.0											

\* over achterzijde



**Hijsvermogen (t) aan de hoofdgiek + 7.1 m. klapjib volledige stempelbasis 5.95 x 5.9 m.**

Mastlengte in meters	Graden	Vlucht in meters																												
		5.0	6.0	7.0	8.0	9.0	10.0	11.0	12.0	13.0	14.0	15.0	16.0	17.0	18.0	19.0	20.0	21.0	22.0	23.0	24.0	25.0	26.0	27.0	28.0	29.0	30.0			
20.7 + 7.1 klapjib	0°	5.6	5.6	5.3	5.0	4.7	4.4	4.2	4.0	3.5	3.1	2.7	2.4	2.2	1.9	1.7	1.5	1.3	1.1	0.9	0.8	0.7								
	30°					3.7	3.6	3.5	3.4	3.3	3.2	3.0	2.6	2.3	2.1	1.8	1.5	1.3												
25.0 + 7.1 klapjib	0°			4.5	4.4	4.2	4.0	3.9	3.7	3.5	3.0	2.7	2.4	2.1	1.8	1.6	1.4	1.3	1.1	0.9	0.8	0.7	0.6	0.5						
	30°							3.4	3.3	3.2	3.1	3.0	2.9	2.6	2.3	2.0	1.8	1.6	1.4	1.2	1.0	0.9	0.7							

**Hijsvermogen (t) aan de hoofdgiek + 13.0 m. klapjib volledige stempelbasis 5.95 x 5.9 m.**

Mastlengte in meters	Graden	Vlucht in meters																												
		5.0	6.0	7.0	8.0	9.0	10.0	11.0	12.0	13.0	14.0	15.0	16.0	17.0	18.0	19.0	20.0	21.0	22.0	23.0	24.0	25.0	26.0	27.0	28.0	29.0	30.0			
20.7 + 13.0 klapjib	0°			2.2	2.2	2.2	2.1	2.1	2.0	1.9	1.9	1.8	1.7	1.6	1.6	1.5	1.4	1.4	1.3	1.1	1.0	0.9	0.8	0.7	0.6	0.5				
	30°									1.7	1.6	1.6	1.5	1.5	1.4	1.4	1.4	1.3	1.3	1.3	1.2	1.0	0.9	0.7						
25.0 + 13.0 klapjib	0°				2.0	2.0	2.0	2.0	1.9	1.9	1.8	1.8	1.7	1.7	1.6	1.6	1.5	1.3	1.2	1.0	0.9	0.8	0.7	0.6	0.5					
	30°												1.5	1.5	1.5	1.4	1.4	1.4	1.3	1.3	1.3	1.2	1.0	0.9	0.8	0.7	0.6			

**Hijsvermogen (t) aan de hoofdgiek + 7.1 m. klapjib halve stempelbasis 5.95 x 4.0 m.**

Mastlengte in meters	Graden	Vlucht in meters																												
		5.0	6.0	7.0	8.0	9.0	10.0	11.0	12.0	13.0	14.0	15.0	16.0	17.0	18.0	19.0	20.0	21.0	22.0	23.0	24.0	25.0	26.0	27.0	28.0	29.0	30.0			
20.7 + 7.1 klapjib	0°	5.6	5.6	5.3	4.3	3.5	2.9	2.5	2.1	1.8	1.6	1.4	1.2	1.0	0.8	0.7	0.5													
	30°					3.7	3.3	2.8	2.4	2.1	1.8	1.5	1.3	1.2	1.0	0.8	0.6	0.5												
25.0 + 7.1 klapjib	0°			4.5	4.2	3.5	2.9	2.4	2.1	1.8	1.5	1.3	1.1	1.0	0.8	0.7	0.5													
	30°							3.3	2.8	2.4	2.0	1.8	1.5	1.3	1.1	1.0	0.8	0.6	0.5											

**Hijsvermogen (t) aan de hoofdgiek + 13.0 m. klapjib halve stempelbasis 5.95 x 4.0 m.**

Mastlengte in meters	Graden	Vlucht in meters																												
		5.0	6.0	7.0	8.0	9.0	10.0	11.0	12.0	13.0	14.0	15.0	16.0	17.0	18.0	19.0	20.0	21.0	22.0	23.0	24.0	25.0	26.0	27.0	28.0	29.0	30.0			
20.7 + 13.0 klapjib	0°			2.2	2.2	2.2	2.1	2.1	2.0	1.9	1.6	1.4	1.2	1.1	0.9	0.8	0.7	0.6	0.5											
	30°									1.7	1.6	1.6	1.5	1.4	1.2	1.1	0.9	0.7	0.6	0.5										
25.0 + 13.0 klapjib	0°				2.0	2.0	2.0	2.0	1.9	1.8	1.6	1.4	1.2	1.0	0.9	0.7	0.6	0.5												
	30°											1.5	1.5	1.5	1.4	1.2	1.0	0.9	0.7	0.6	0.5									

**Hijswermogen (t) aan de hoofdgiek + 1.20 m. montagemast volledige stempelbasis 5.95 x 5.9 m.**

Mastlengte in meters	Vlucht in meters																						
	3.0	3.5	4.0	4.5	5.0	6.0	7.0	8.0	9.0	10.0	11.0	12.0	13.0	14.0	15.0	16.0	17.0	18.0	19.0	20.0	21.0	22.0	23.0
7.5	15.0	15.0	15.0	15.0	14.5																		
11.9	15.0	15.0	15.0	14.9	14.2	12.0	9.9	7.6	6.2	5.2													
16.3	12.5	12.5	12.5	12.4	12.2	11.5	10.0	7.9	6.3	5.2	4.4	3.7	3.2	2.8									
20.7			10.0	10.0	10.0	9.3	7.8	6.4	5.3	4.5	3.8	3.2	2.8	2.4	2.1	1.9	1.6						
25.0					8.0	8.0	7.3	6.6	6.0	5.3	4.5	3.8	3.3	2.8	2.4	2.1	1.9	1.6	1.4	1.2	1.1	0.9	0.8

**Hijswermogen (t) aan de hoofdgiek + 1.20 m. montagemast halve stempelbasis 5.95 x 4.0 m.**

Mastlengte in meters	Vlucht in meters																						
	3.0	3.5	4.0	4.5	5.0	6.0	7.0	8.0	9.0	10.0	11.0	12.0	13.0	14.0	15.0	16.0	17.0	18.0	19.0	20.0	21.0	22.0	23.0
7.5	15.0	15.0	14.2	11.0	8.9																		
11.9	15.0	15.0	14.1	11.5	9.3	6.5	5.0	3.9	3.1	2.6													
16.3	12.5	12.5	12.5	10.7	9.3	6.7	5.1	4.0	3.2	2.6	2.2	1.8	1.5	1.3									
20.7			10.0	9.8	8.6	6.8	5.2	4.1	3.3	2.7	2.3	1.9	1.6	1.3	1.1	1.0	0.8	0.7					
25.0					7.9	6.3	5.1	4.1	3.3	2.7	2.3	1.9	1.6	1.4	1.1	1.0	0.8	0.7	0.5				