

Tabellen volgens C.E. NORM (75%)
 DIN 15019.2

Standaardafmetingen
 van de stempelschotten 1 x 1.4 m

Gewicht van hijsblokken

30 T	3 schijfs	325 kg
5 T	Wartel	130 kg

Toelaatbare reeptrek

Hijsdraad doorsnede	16 mm
Capaciteit	4.3 ton

**Hijsvermogen (t) aan de hoofdgiek
 volledige stempelbasis 6.35 x 6.2 m.**

Mastlengte in meters	Vlucht in meters																	Ballast 5.4 ton				
	3.0	3.5	4.0	4.5	5.0	6.0	7.0	8.0	9.0	10.0	12.0	14.0	16.0	18.0	20.0	22.0	24.0	26.0	28.0	30.0		
7.8	40.0*	32.4	30.5	28.3																		
10.7	25.0	25.0	25.0	25.0	24.0	20.3	17.0															
13.6	21.0	21.0	21.0	20.7	19.7	17.9	16.0	15.4	12.6	10.5												
19.5			16.0	16.0	16.0	16.0	15.3	14.0	12.3	10.3	8.1	6.3	5.1									
25.3						14.0	13.2	12.2	11.2	10.3	7.6	5.9	5.0	4.3	3.5	3.0						
28.4							11.1	10.8	10.1	9.4	7.6	6.0	4.9	4.0	3.4	2.8	2.3					
31.2								9.0	8.8	8.3	7.3	5.9	4.7	3.8	3.1	2.6	2.1	1.7	1.4			

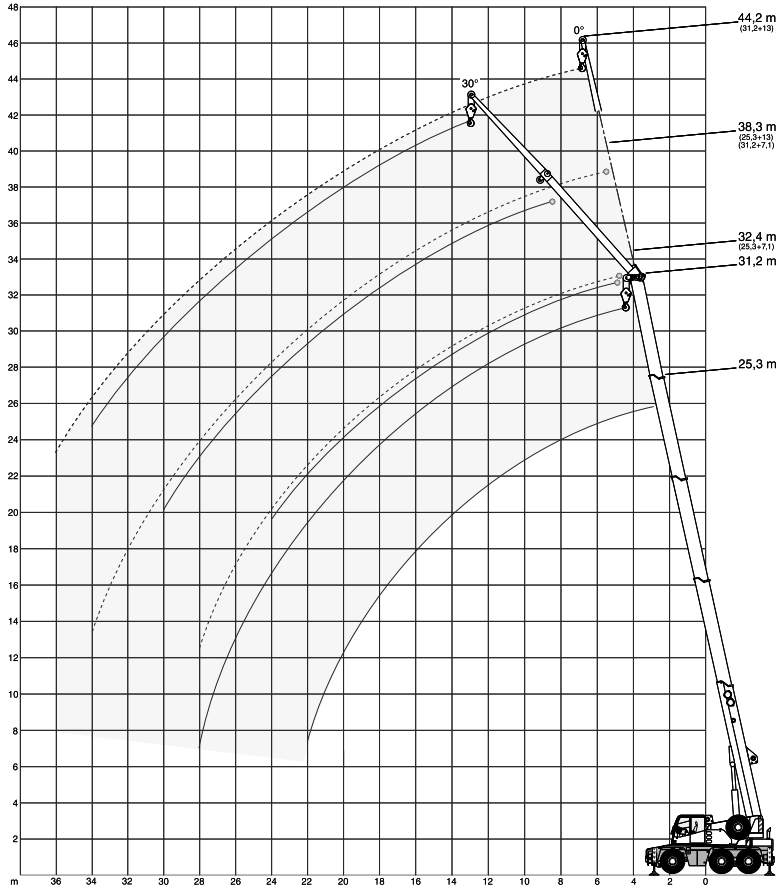
* over achterzijde

**Hijsvermogen (t) aan de hoofdgiek
 halve stempelbasis 6.35 x 4.4 m.**

Mastlengte in meters	Vlucht in meters																	Ballast 5.4 ton				
	3.0	3.5	4.0	4.5	5.0	6.0	7.0	8.0	9.0	10.0	12.0	14.0	16.0	18.0	20.0	22.0	24.0	26.0	28.0	30.0		
7.8	34.3	31.2	28.3	23.8																		
10.7	25.0	25.0	25.0	23.0	18.4	13.0	9.8															
13.6	21.0	21.0	21.0	20.7	18.0	14.4	11.1	8.9	7.3	6.2												
19.5			16.0	16.0	16.0	14.2	10.8	8.6	7.1	6.0	4.4	3.7	3.0									
25.3						13.6	10.9	8.7	7.7	6.5	4.9	3.8	3.0	2.5	2.1	1.7						
28.4							10.8	8.8	7.4	6.3	4.7	3.6	2.8	2.3	1.8	1.5	1.2					
31.2								8.8	7.2	6.1	4.5	3.4	2.7	2.1	1.7	1.3	1.0	0.8	0.6			

**Hijsvermogen (t) aan de hoofdgiek
 speciale stempelbasis 6.35 x 2.34 m.**

Mastlengte in meters	Vlucht in meters																	Ballast 5.4 ton				
	3.0	3.5	4.0	4.5	5.0	6.0	7.0	8.0	9.0	10.0	12.0	14.0	16.0	18.0	20.0	22.0	24.0	26.0	28.0	30.0		
7.8			11.8	9.8																		
10.7			11.2	9.2	7.7	5.7	4.3															
13.6			12.6	10.5	8.9	6.7	5.3	4.3	3.6	3.0												
19.4			12.9	10.8	9.2	7.0	5.5	4.5	3.8	3.2	2.3	1.7	1.3									
25.3																						
28.3																						
31.2																						



**Hijsvermogen (t) aan de hoofdgiek
 + 7.1 m. klapjib volledige stempelbasis 6.35 x 6.2 m.**

Mastlengte in meters	Graden	Vlucht in meters																Ballast 5.4 ton			
		8.0	9.0	10.0	12.0	14.0	16.0	18.0	20.0	22.0	24.0	26.0	28.0	30.0	32.0	34.0	36.0	38.0			
25.3 + 7.1 klapjib	0°	6.5	6.2	5.9	5.4	4.9	4.5	4.0	3.3	2.8	2.3	1.9	1.6								
	30°			4.2	4.0	3.8	3.7	3.5	3.4	2.9	2.4										
31.2 + 7.1 klapjib	0°			5.0	4.8	4.6	4.4	4.0	3.3	2.7	2.2	1.8	1.5	1.2	0.9	0.7					
	30°				3.9	3.7	3.5	3.3	3.1	2.9	2.4	2.0	1.6	1.3							

**Hijsvermogen (t) aan de hoofdgiek
 + 13.0 m. klapjib volledige stempelbasis 6.35 x 6.2 m.**

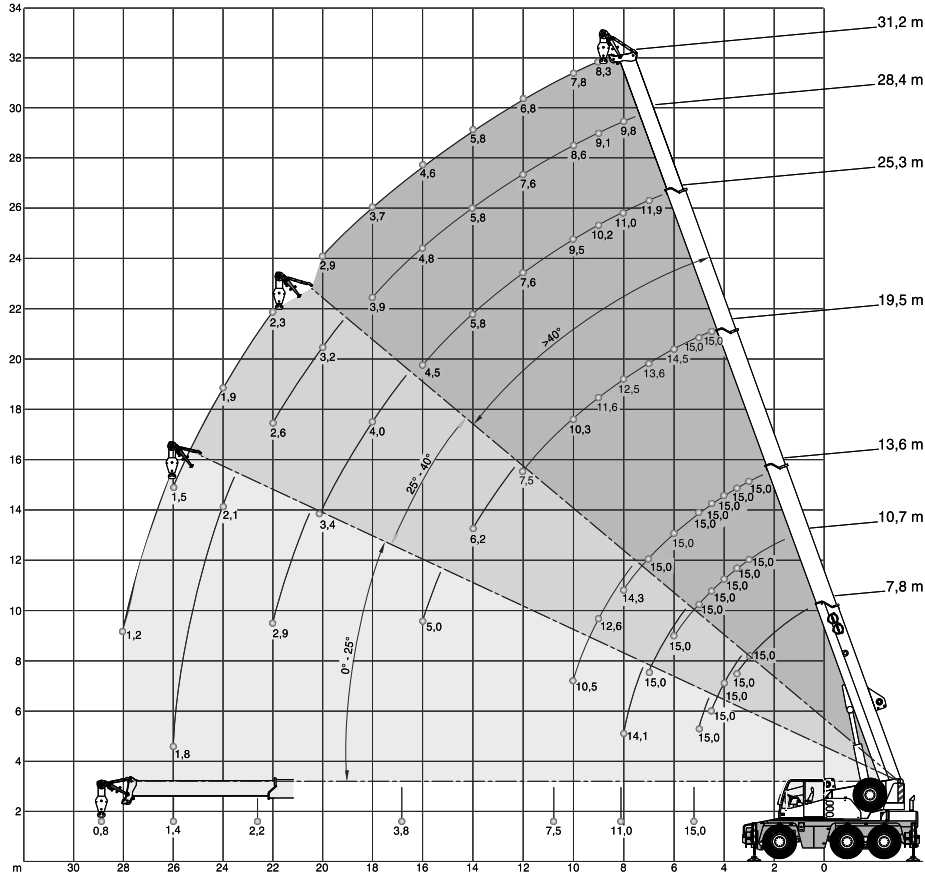
Mastlengte in meters	Graden	Vlucht in meters																Ballast 5.4 ton			
		8.0	9.0	10.0	12.0	14.0	16.0	18.0	20.0	22.0	24.0	26.0	28.0	30.0	32.0	34.0	36.0	38.0			
25.3 + 13.0 klapjib	0°			3.6	3.3	3.0	2.8	2.6	2.4	2.3	2.1	2.0	1.7	1.5	1.2	1.0					
	30°						2.2	2.1	2.0	1.9	1.9	1.8	1.8	1.6							
31.2 + 13.0 klapjib	0°				3.0	2.9	2.8	2.7	2.5	2.4	2.2	1.9	1.6	1.3	1.1	0.9	0.7				
	30°						2.1	2.0	1.9	1.9	1.8	1.8	1.6	1.3	1.0						

**Hijsvermogen (t) aan de hoofdgiek
 + 7.1 m. klapjib halve stempelbasis 6.35 x 4.4 m.**

Mastlengte in meters	Graden	Vlucht in meters																Ballast 5.4 ton			
		8.0	9.0	10.0	12.0	14.0	16.0	18.0	20.0	22.0	24.0	26.0	28.0	30.0	32.0	34.0	36.0	38.0			
25.3 + 7.1 klapjib	0°	6.5	6.2	5.9	4.7	3.6	2.8	2.3	1.8	1.5	1.2	0.9	0.7								
	30°			4.2	4.0	3.8	3.1	2.5	2.0	1.6	1.3										
31.2 + 7.1 klapjib	0°			5.0	4.6	3.5	2.8	2.2	1.7	1.4	1.1	0.8	0.6								
	30°				3.9	3.7	3.1	2.5	2.0	1.6	1.3	1.0	0.7								

**Hijsvermogen (t) aan de hoofdgiek
 + 13.0 m. klapjib halve stempelbasis 6.35 x 4.4 m.**

Mastlengte in meters	Graden	Vlucht in meters																Ballast 5.4 ton			
		8.0	9.0	10.0	12.0	14.0	16.0	18.0	20.0	22.0	24.0	26.0	28.0	30.0	32.0	34.0	36.0	38.0			
25.3 + 13.0 klapjib	0°			3.6	3.3	3.0	2.8	2.4	1.9	1.6	1.3	1.0	0.8	0.6							
	30°						2.2	2.1	2.0	1.9	1.6	1.3	1.0	0.8							
31.2 + 13.0 klapjib	0°				3.0	2.9	2.8	2.3	1.8	1.5	1.2	0.9	0.7								
	30°						2.1	2.0	1.8	1.5	1.2	1.0	0.7								



**Hijsvermogen (t) aan de hoofdgiek + 1.2 m. montagemast
 volledige stempelbasis 6.35 x 6.2 m.**

Mastlengte in meters	Vlucht in meters																	Ballast 5.4 ton					
	3.0	3.5	4.0	4.5	5.0	6.0	7.0	8.0	9.0	10.0	12.0	14.0	16.0	18.0	20.0	22.0	24.0	26.0	28.0	30.0			
7.8	15.0	15.0	15.0	15.0	15.0																		
10.7	15.0	15.0	15.0	15.0	15.0	15.0	15.0	14.1															
13.6	15.0	15.0	15.0	15.0	15.0	15.0	14.3	12.6	10.5														
19.5				15.0	15.0	14.5	13.6	12.5	11.6	10.3	7.5	6.2	5.0										
25.3							11.9	11.0	10.2	9.5	7.6	5.8	4.5	4.0	3.4	2.9							
28.4								9.8	9.1	8.6	7.6	5.8	4.8	3.9	3.2	2.6	2.1	1.8					
31.2									8.3	7.8	6.8	5.8	4.6	3.7	2.9	2.3	1.9	1.5	1.2				

**Hijsvermogen (t) aan de hoofdgiek + 1.2 m. montagemast
 halve stempelbasis 6.35 x 4.4 m.**

Mastlengte in meters	Vlucht in meters																	Ballast 5.4 ton					
	3.0	3.5	4.0	4.5	5.0	6.0	7.0	8.0	9.0	10.0	12.0	14.0	16.0	18.0	20.0	22.0	24.0	26.0	28.0	30.0			
7.8	15.0	15.0	15.0	15.0	15.0																		
10.7	15.0	15.0	15.0	15.0	15.0	13.3	10.0	7.9															
13.6	15.0	15.0	15.0	15.0	15.0	14.7	11.2	8.9	7.4	6.2													
19.5				15.0	15.0	14.4	11.0	9.2	7.6	6.4	4.7	3.6	2.9										
25.3					11.0	8.7	7.2	6.5	4.8	3.7	2.9	2.4	1.9	1.6									
28.4							8.7	7.4	6.2	4.6	3.5	2.7	2.1	1.7	1.3	1.1	0.8						
31.2								7.2	6.0	4.3	3.3	2.5	1.9	1.5	1.1	0.8							

**Hijsvermogen (t) aan de hoofdgiek + 1.2 m. montagemast
 volledige stempelbasis 5.95 x 5.9 m.**

Mastlengte in meters	Vlucht in meters																	Ballast 5.4 ton					
	3.0	3.5	4.0	4.5	5.0	6.0	7.0	8.0	9.0	10.0	11.0	12.0	13.0	14.0	15.0	16.0	17.0	18.0	19.0	20.0	21.0	22.0	23.0
7.5	15.0	15.0	15.0	15.0	14.5																		
11.9	15.0	15.0	15.0	14.9	14.2	12.0	9.9	7.6	6.2	5.2													
16.3	12.5	12.5	12.5	12.4	12.2	11.5	10.0	7.9	6.3	5.2	4.4	3.7	3.2	2.8									
20.7			10.0	10.0	10.0	10.0	9.3	7.8	6.4	5.3	4.5	3.8	3.2	2.8	2.4	2.1	1.9	1.6					
25.0					8.0	8.0	7.3	6.6	6.0	5.3	4.5	3.8	3.3	2.8	2.4	2.1	1.9	1.6	1.4	1.2	1.1	0.9	0.8

Hijsvermogen (t) aan de hoofdgiek + 1.2 m. montagemast
 halve stempelbasis 5.95 x 4.0 m.

Mastlengte in meters	Vlucht in meters																							Ballast 5.4 ton	
	3.0	3.5	4.0	4.5	5.0	6.0	7.0	8.0	9.0	10.0	11.0	12.0	13.0	14.0	15.0	16.0	17.0	18.0	19.0	20.0	21.0	22.0	23.0		
7.5	15.0	15.0	14.2	11.0	8.9																				
11.9	15.0	15.0	14.1	11.5	9.3	6.5	5.0	3.9	3.1	2.6															
16.3	12.5	12.5	10.7	9.3	6.7	5.1	4.0	3.2	2.6	2.2	1.8	1.5	1.3												
20.7			10.0	9.8	8.6	6.8	5.2	4.1	3.3	2.7	2.3	1.9	1.6	1.3	1.1	1.0	0.8	0.7							
25.0					7.9	6.3	5.1	4.1	3.3	2.7	2.3	1.9	1.6	1.4	1.1	1.0	0.8	0.7	0.5						

