

Tabellen volgens C.E. NORM (75%)  
DIN 15019.2

Standaardafmetingen  
van de stempelschotten 2.76 x 1.7 m

#### Gewicht van hijsblokken

38.3 T 3 schijfs 470 kg  
4.3 T Wartel 130 kg

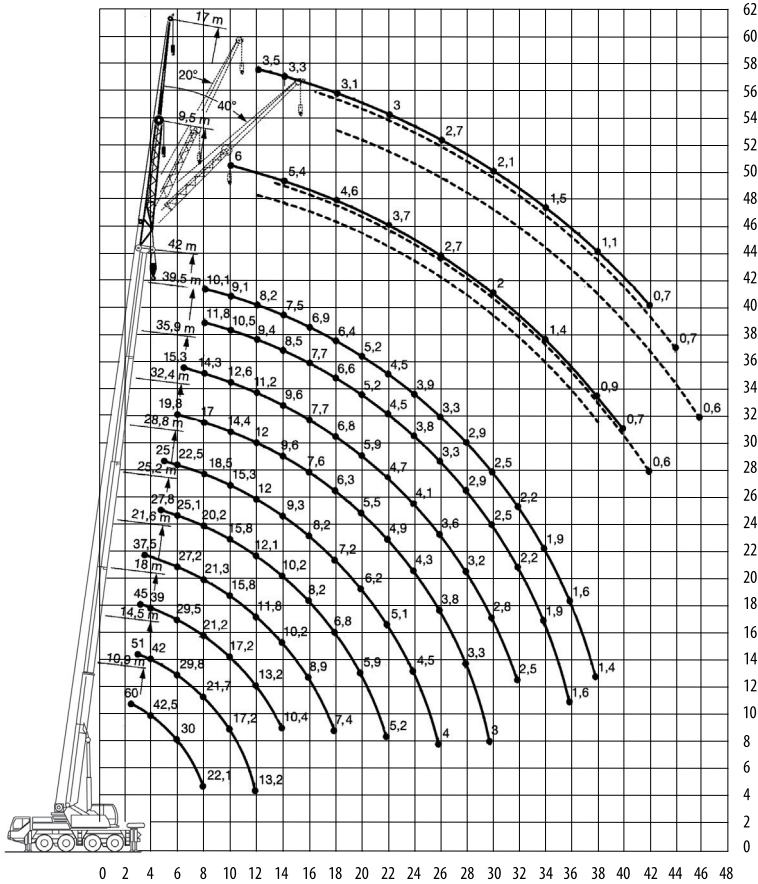
#### Toelaatbare reeptrek

Hijsdraad doorsnede 17 mm  
Capaciteit 5.7 ton

#### Maten in mm

Bandmaat	A	A*	B	C	$\alpha$	$\alpha_1$	$\beta$	$\beta_1$
16.00 R 25	3820	3650	390	460	22°	17°	20°	16°

\* verlaagd (100 mm)



62  
60  
58  
56  
54  
52  
50  
48  
46  
44  
42  
40  
38  
36  
34  
32  
30  
28  
26  
24  
22  
20  
18  
16  
14  
12  
10  
8  
6  
4  
2  
0

0 2 4 6 8 10 12 14 16 18 20 22 24 26 28 30 32 34 36 38 40 42 44 46 48

**Hijsvermogen (t) aan de hoofdgiek volledige stempelbasis 8.0 x 6.3 m.**

Mastlengte in meters	Vlucht in meters																	Ballast 12 ton									
	2.5	3.0	3.5	4.0	4.5	5.0	6.0	7.0	8.0	9.0	10.0	12.0	14.0	16.0	18.0	20.0	22.0	24.0	26.0	28.0	30.0	32.0	34.0	36.0	38.0		
10.9	70.0*	51.0	46.5	42.5	38.5	35.5	30.0	25.7	21.9																		
14.5		51.0	46.0	42.0	38.5	35.0	29.8	25.2	21.7	18.9	16.1	12.3															
18.0		45.0	42.0	39.0	36.5	34.0	29.4	24.8	21.0	18.9	16.2	12.3	9.6														
21.6			37.5	35.0	33.0	31.0	27.2	24.2	20.2	17.1	14.7	11.4	10.2	8.2	6.8												
25.2					27.8	28.1	25.1	22.5	19.7	16.8	14.5	12.1	9.5	7.6	6.6	5.8	4.9										
28.8					24.5	25.0	22.5	20.3	18.5	16.1	14.0	10.8	9.2	8.1	6.8	5.8	4.8	4.2									
32.4						19.8	18.3	17.0	15.6	13.9	10.9	8.8	7.1	6.2	5.4	4.6	4.0	3.5	3.1								
35.9							15.3	14.3	13.4	12.6	10.7	8.7	7.6	6.4	5.2	4.4	3.8	3.3	2.9	2.5	2.2						
39.5								11.8	11.1	10.5	9.4	8.5	7.2	6.1	4.9	4.1	3.5	3.0	2.6	2.2	1.9	1.6	1.3				
42.0								10.1	9.5	9.1	8.2	7.5	6.9	6.0	4.9	4.1	3.5	3.0	2.6	2.2	1.9	1.6	1.4	1.1			

\* over achterzijde

**Hijsvermogen (t) aan de hoofdgiek halve stempelbasis 8.0 x 4.5 m.**

Mastlengte in meters	Vlucht in meters																	Ballast 12 ton									
	3.0	3.5	4.0	4.5	5.0	6.0	7.0	8.0	9.0	10.0	12.0	14.0	16.0	18.0	20.0	22.0	24.0	26.0	28.0	30.0	32.0						
10.9	43.5	39.5	35.5	32.5	29.7	24.2	18.7	14.9																			
14.5	43.5	39.0	35.0	32.0	28.3	23.1	18.8	15.6	12.9	10.9	8.1																
18.0	43.0	38.5	33.5	28.8	27.2	21.6	17.8	14.9	12.8	11.3	8.4	6.6															
21.6		36.0	31.0	26.6	23.3	18.8	17.1	14.5	12.9	11.3	8.7	6.9	5.5	4.6													
25.2				25.2	22.8	19.0	15.9	13.5	12.1	10.8	8.5	6.8	5.3	4.4	3.7	3.2											
28.8				23.5	20.9	17.4	15.3	13.6	11.8	10.4	8.3	6.7	5.3	4.3	3.6	3.1	2.6										
32.4						16.5	13.9	12.4	11.2	9.9	7.8	6.4	5.1	4.2	3.5	2.9	2.4	2.1	1.7								
35.9							13.6	12.2	10.6	9.3	7.4	6.0	4.9	4.0	3.3	2.7	2.3	1.9	1.6	1.3	1.0						
39.5								11.3	9.9	8.7	6.9	5.5	4.5	3.6	2.9	2.4	1.9	1.6	1.3	1.0	0.8						
42.0								10.1	9.5	8.6	6.8	5.5	4.5	3.6	2.9	2.4	1.9	1.6	1.3	1.0	0.8						

**Hijsvermogen (t) aan de hoofdgiek speciaal gestempeld 8.00 x 2.30 m.**

Mastlengte in meters	Vlucht in meters																	Ballast 12 ton									
	3.0	3.5	4.0	4.5	5.0	6.0	7.0	8.0	9.0	10.0	12.0	14.0	16.0	18.0	20.0	22.0	24.0	26.0	28.0	30.0	32.0	34.0	36.0	38.0			
10.9				16.3	14.3	11.3	9.1	7.3																			
14.5				16.5	14.9	12.5	11.1	9.1	7.6	6.5	5.3	3.9															
18.0				14.7	12.7	11.2	10.5	9.0	7.6	6.5	5.5	4.0	3.1														
21.6					12.1	10.7	8.4	8.9	7.5	6.5	5.6	4.3	3.3	2.6	2.0												
25.2					10.4	8.4	8.4	7.2	6.2	5.4	4.1	3.1	2.4	1.9	1.5	1.2											
28.8						7.9	7.6	6.9	5.9	5.2	4.0	3.1	2.4	1.8	1.4	1.1	0.8										
32.4							6.6	6.4	5.5	4.8	3.7	2.8	2.2	1.6	1.2												
35.9								6.0	5.2	4.5	3.4	2.6	1.9	1.4	1.0												
39.5									5.4	4.6	4.0	3.0	2.2	1.6	1.1												
42.0									5.3	4.6	3.9	2.9	2.2	1.6	1.1												

**Hijsvermogen (t) aan de hoofdgiek + 9.5 m klapjib volledige stempelbasis 8.0 x 6.3 m.**

Mastlengte in meters	Graden	Vlucht in meters																	Ballast 12 ton									
		3.0	3.5	4.0	4.5	5.0	6.0	7.0	8.0	9.0	10.0	12.0	14.0	16.0	18.0	20.0	22.0	24.0	26.0	28.0	30.0	32.0	34.0	36.0	38.0	40.0	42.0	
10.8 + 9.5 klapjib	0°	11.4	11.4	11.4	11.4	11.4	11.4	11.4	10.7	9.9	9.2	8.0	7.0	6.1														
	20°						9.2	8.6	8.0	7.6	7.3	6.6	6.1	5.6														
	40°								6.5	6.2	5.9	5.5	5.2	5.0														
32.4 + 9.5 klapjib	0°								11.4	10.8	10.2	9.2	8.3	6.9	5.8	4.6	4.0	3.6	3.3	3.0	2.6	2.3	2.0	1.7	1.4			
	20°									8.2	7.7	7.4	7.1	6.2	4.9	4.2	3.7	3.3	3.1	2.7	2.4	2.1	1.8	1.5				
	40°										6.3	6.1	5.9	5.1	4.4	3.8	3.5	3.2	2.8	2.4	2.1	1.8						
35.9 + 9.5 klapjib	0°								9.2	9.0	8.5	7.7	7.0	6.3	5.6	4.6	4.2	3.7	3.2	2.8	2.4	2.1	1.8	1.5	1.3	1.1	0.9	
	20°									7.4	6.7	6.0	5.5	4.9	4.1	3.8	3.4	2.9	2.5	2.2	1.9	1.6	1.4	1.1	0.9			
	40°										6.0	5.8	5.6	5.1	4.4	3.9	3.5	3.0	2.6	2.3	2.0	1.7	1.4	1.1				
39.5 + 9.5 klapjib	0°								7.0	6.9	6.4	5.9	5.4	4.9	4.5	3.9	3.4	2.9	2.4	3.1	1.8	1.5	1.2	1.0	0.8	0.6		
	20°									6.0	5.6	5.2	4.9	4.5	4.1	3.6	3.1	2.7	2.3	1.9	1.6	1.4	1.1	0.9	0.7			
	40°										4.9	4.7	4.5	4.3	3.8	3.2	2.8	2.4	2.0	1.7	1.4	1.2	0.9	0.7				
42.0 + 9.5 klapjib	0°								6.0	5.9	5.4	5.0	4.6	4.2	3.9	3.3	2.8	2.4	2.0	1.7	1.4	1.2	1.0	0.8	0.6			
	20°									5.4	5.1	4.7	4.4	4.2	3.8	3.5	3.0	2.6	2.2	1.9	1.6	1.3	1.1	0.9	0.7			
	40°										4.6	4.4	4.1	3.9	3.7	3.2	2.8	2.3	2.0	1.7	1.4	1.1	0.9	0.7				

**Hijsvermogen (t) aan de hoofdgiek + 17.0 m klapjib volledige stempelbasis 8.0 x 6.3 m.**

Mastlengte in meters	Graden	Vlucht in meters																				Ballast 12 ton							
		4.0	4.5	5.0	6.0	7.0	8.0	9.0	10.0	12.0	14.0	16.0	18.0	20.0	22.0	24.0	26.0	28.0	30.0	32.0	34.0	36.0	38.0	40.0	42.0	44.0	46.0	48.0	
10.8 + 17.0 klapjib	0°	5.7	5.7	5.7	5.7	5.5	5.2	4.9	4.6	4.1	3.7	3.3	3.1	2.8	2.6	2.4													
	20°								3.7	3.4	3.1	2.9	2.7	2.5	2.4	2.3													
	40°										2.7	2.5	2.4	2.3	2.3														
32.4 + 17.0 klapjib	0°							4.6	4.5	4.3	4.1	3.9	3.7	3.5	3.4	3.2	3.1	2.7	2.5	2.3	2.1	1.9	1.7	1.4	1.2	1.1	0.9		
	20°									3.1	3.0	2.9	2.8	2.7	2.6	2.5	2.4	2.4	2.2	2.1	1.8	1.6	1.4	1.1	0.9				
	40°										2.4	2.4	2.3	2.3	2.3	2.2	2.2	2.2	2.2	2.2	1.9	1.7	1.4	1.1					
35.9 + 17.0 klapjib	0°							4.2	4.0	3.8	3.7	3.6	3.4	3.3	3.2	3.0	2.8	2.6	2.2	1.9	1.7	1.5	1.3	1.1	0.9	0.7	0.6		
	20°									3.1	2.9	2.8	2.7	2.6	2.6	2.5	2.5	2.4	2.2	1.9	1.6	1.4	1.2	1.0	0.8	0.7			
	40°										2.4	2.4	2.3	2.3	2.2	2.2	2.2	2.2	2.2	2.1	1.8	1.5	1.3	1.1	0.8				
39.5 + 17.0 klapjib	0°								3.6	3.5	3.4	3.3	3.2	3.1	3.0	2.9	2.6	2.3	1.9	1.6	1.4	1.2	1.0	0.8	0.6				
	20°									2.8	2.7	2.7	2.6	2.5	2.4	2.4	2.2	1.9	1.7	1.4	1.2	1.0	0.8	0.6					
	40°										2.4	2.3	2.3	2.2	2.2	2.2	2.2	2.2	2.2	1.8	1.6	1.3	1.1	0.9	0.7				
42.0 + 17.0 klapjib	0°								3.5	3.3	3.2	3.1	3.1	3.1	3.0	2.9	2.7	2.5	2.2	1.9	1.6	1.3	1.1	0.9	0.7	0.6			
	20°									2.8	2.7	2.6	2.5	2.5	2.4	2.4	2.2	1.9	1.6	1.4	1.1	0.9	0.8	0.6					
	40°														2.3	2.3	2.2	2.2	2.2	2.2	2.1	1.8	1.5	1.3	1.1	0.9	0.7		