

Tabellen volgens C.E. NORM (75%)  
DIN 15019.2

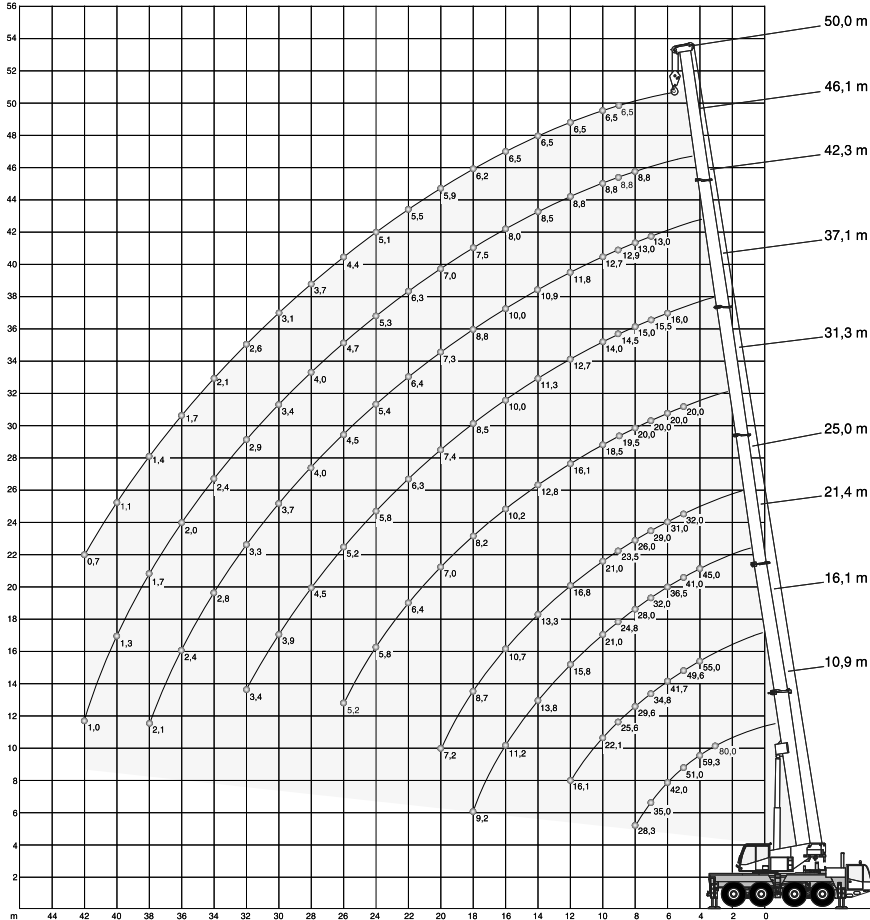
Standaardafmetingen  
van de stempelschotten 2.2 x 1.3 m

#### Gewicht van hijsblokken

38.5 T	3 schijfs	550 kg
16.5 T	1 schijfs	350 kg
5.5 T	Wartel	170 kg

#### Toelaatbare reeptrek

Hijsdraad doorsnede	18 mm
Capaciteit	5.5 ton



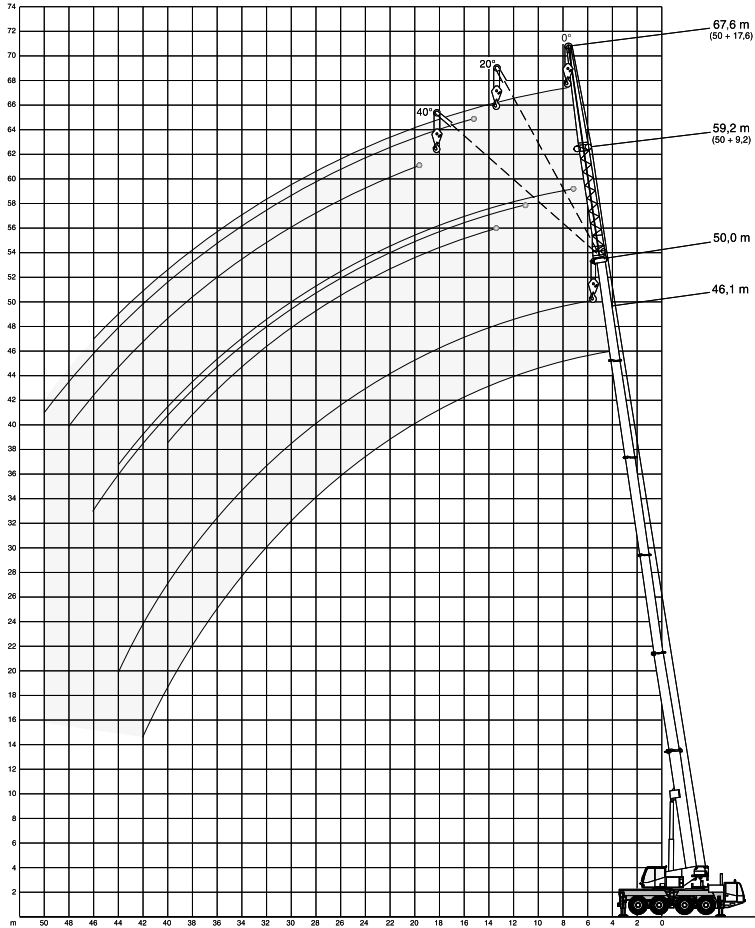
### Hijswermogen (t) aan de hoofdgiek volledige stempelbasis 7.70 x 7.0 m.

Mastlengte in meters	Vlucht in meters														Ballast 18 ton														
	3.0	3.0	3.5	4.0	4.5	5.0	6.0	7.0	8.0	9.0	10.0	12.0	14.0	16.0	18.0	20.0	22.0	24.0	26.0	28.0	30.0	32.0	34.0	36.0	38.0	40.0	42.0	44.0	
10.9	80.0*	70.0	64.4	59.3	54.9	51.0	42.0	35.0	28.3																				
16.1			55.0	52.9	49.6	41.7	34.8	29.6	25.6	22.1	16.1																		
21.4				45.0	43.0	41.0	36.5	32.0	28.0	24.8	21.0	15.8	13.8	11.2	9.2														
25.0					32.0	31.0	29.0	26.0	23.5	21.0	16.8	13.3	10.7	8.7	7.2														
31.3						20.0	20.0	20.0	20.0	19.5	18.5	16.1	12.8	10.2	8.2	7.0	6.4	5.8	5.2										
37.1							16.0	15.5	15.0	14.5	14.0	12.7	11.3	10.0	8.5	7.4	6.3	5.8	5.2	4.5	3.9	3.4							
42.3								13.0	13.0	12.9	12.7	11.8	10.9	10.0	8.8	7.3	6.4	5.4	4.5	4.0	3.7	3.3	2.8	2.4	2.1				
46.1									8.8	8.8	8.8	8.8	8.5	8.0	7.5	7.0	6.3	5.3	4.7	4.0	3.4	2.9	2.4	2.0	1.7	1.3	1.0		
50.0										6.5	6.5	6.5	6.5	6.5	6.2	5.9	5.5	5.1	4.4	3.7	3.1	2.6	2.1	1.7	1.4	1.1	0.7		

\* over achterzijde

### Hijswermogen (t) aan de hoofdgiek halve stempelbasis 7.7 x 4.5 m.

Mastlengte in meters	Vlucht in meters														Ballast 18 ton														
	3.0	3.5	4.0	4.5	5.0	6.0	7.0	8.0	9.0	10.0	12.0	14.0	16.0	18.0	20.0	22.0	24.0	26.0	28.0	30.0	32.0	34.0	36.0						
10.9	61.7	55.6	50.6	46.3	39.8	28.2	21.4	17.1																					
16.1		55.0	50.3	46.1	39.5	27.9	21.1	16.7	13.7	11.4	8.2																		
21.4			45.0	39.6	34.4	26.7	20.1	18.4	15.2	12.8	9.5	7.4	5.9	4.8															
25.0				32.0	31.9	25.2	20.1	17.9	14.7	12.3	9.1	7.0	5.4	4.3	3.5														
31.3					20.0	20.0	19.9	17.3	14.2	11.9	10.1	7.9	6.4	5.2	4.3	3.6	3.0	2.5											
37.1						16.0	15.5	15.0	13.8	12.6	10.0	7.9	6.3	5.2	4.3	3.5	3.0	2.5	2.0	1.7	1.4								
42.3							13.0	13.0	12.9	12.2	9.5	7.3	5.9	5.1	4.2	3.5	2.9	2.4	2.0	1.7	1.3	1.0	0.7						
46.1								8.8	8.8	8.8	8.8	7.2	5.9	4.8	3.9	3.2	2.6	2.1	1.7	1.3	0.9	0.6							
50.0									6.5	6.5	6.5	6.5	5.7	4.6	3.7	3.0	2.4	1.9	1.4	1.0	0.6								



**Hijsvermogen (t) aan de hoofdgiek  
 + 9.2 m. klapjib volledige stempelbasis 7.7 x 7.0 m.**

Mastlengte in meters	Graden	Vlucht in meters																Ballast 18 ton			
		10.0	12.0	14.0	16.0	18.0	20.0	22.0	24.0	26.0	28.0	30.0	32.0	34.0	36.0	38.0	40.0	42.0	44.0	46.0	
46.1 + 9.2 klapjib	0°	3.9	3.9	3.9	3.9	3.9	3.7	3.5	3.3	3.1	3.0	2.8	2.7	2.4	2.0	1.6	1.3	1.0	0.8		
	20°			3.4	3.4	3.3	3.2	3.1	2.9	2.8	2.6	2.5	2.4	2.3	2.2	1.8	1.5	1.2	0.9	0.6	
	40°				3.0	3.0	2.9	2.8	2.7	2.6	2.5	2.4	2.3	2.2	2.1	1.9	1.6				
50.0 + 9.2 klapjib	0°		3.0	3.0	3.0	2.9	2.8	2.6	2.5	2.3	2.2	2.1	2.0	1.9	1.5	1.2	0.9	0.7			
	20°			3.0	3.0	2.9	2.8	2.7	2.5	2.4	2.2	2.1	2.0	1.9	1.8	1.8	1.4	1.1	0.9	0.6	
	40°				2.7	2.7	2.6	2.5	2.3	2.2	2.1	2.0	1.9	1.9	1.8	1.8	1.6				

**Hijsvermogen (t) aan de hoofdgiek  
 + 17.6 m. klapjib volledige stempelbasis 7.7 x 7.0 m.**

Mastlengte in meters	Graden	Vlucht in meters																Ballast 18 ton			
		12.0	14.0	16.0	18.0	20.0	22.0	24.0	26.0	28.0	30.0	32.0	34.0	36.0	38.0	40.0					
46.1 + 17.6 klapjib	0°	1.7	1.7	1.7	1.6	1.5	1.5	1.4	1.4	1.3	1.1	0.8									
	20°				1.4	1.4	1.4	1.4	1.4	1.4	1.3	1.2	1.1	1.0	0.7						
	40°						1.2	1.1	1.1	1.1	1.1	1.1	1.1	1.1	1.0	0.7					
50.0 + 17.6 klapjib	0°		1.2	1.2	1.2	1.2	1.1	1.1	1.0	1.0	1.0	1.0	0.7								
	20°					1.1	1.1	1.1	1.1	1.0	1.0	1.0	1.0	0.9	0.6						
	40°							1.0	1.0	1.0	1.0	1.0	1.0	0.9	0.9	0.7					

**Hijsvormogen (t) aan de hoofdgiek  
 + 9.2 m. klapjib halve stempelbasis 7.7 x 4.5 m.**

Mastlengte in meters	Graden	Vlucht in meters														Ballast 18 ton					
		10.0	12.0	14.0	16.0	18.0	20.0	22.0	24.0	26.0	28.0	30.0	32.0	34.0	36.0						
46.1 + 9.2 klapjib	0°	3.9	3.9	3.9	3.9	3.9	3.7	3.2	2.6	2.1	1.6	1.2	0.8								
	20°			3.4	3.4	3.3	3.2	3.1	2.9	2.4	1.9	1.5	1.1	0.8							
	40°				3.0	3.0	2.9	2.8	2.7	2.6	2.2	1.7	1.3	0.9	0.6						
50.0 + 9.2 klapjib	0°			3.0	3.0	3.0	2.9	2.8	2.5	2.0	1.6	1.1	0.8								
	20°				3.0	3.0	2.9	2.8	2.7	2.5	2.4	1.9	1.5	1.1	0.7						
	40°					2.7	2.7	2.6	2.5	2.3	2.2	2.1	1.7	1.3	0.9	0.6					

**Hijsvormogen (t) aan de hoofdgiek  
 + 17.6 m. klapjib halve stempelbasis 7.7 x 4.5 m.**

Mastlengte in meters	Graden	Vlucht in meters														Ballast 18 ton					
		12.0	14.0	16.0	18.0	20.0	22.0	24.0	26.0	28.0	30.0	32.0	34.0	36.0	38.0	40.0					
46.1 + 17.6 klapjib	0°	1.5	1.5	1.5	1.5	1.5	1.4	1.4	1.3	1.3	1.3	1.2	0.9	0.6							
	20°				1.4	1.4	1.4	1.4	1.4	1.3	1.3	1.2	1.2	1.0	0.8						
	40°							1.2	1.1	1.1	1.1	1.1	1.1	1.0	1.0	0.8					
50.0 + 17.6 klapjib	0°			1.0	1.0	1.0	1.0	1.0	1.0	1.0	0.9	0.9	0.8								
	20°					1.0	1.0	1.0	1.0	1.0	1.0	1.0	0.9	0.9	0.7						
	40°							1.0	1.0	1.0	1.0	1.0	1.0	0.9	0.9	0.8					