

Tabellen volgens C.E. NORM (75%)
DIN 15019.2

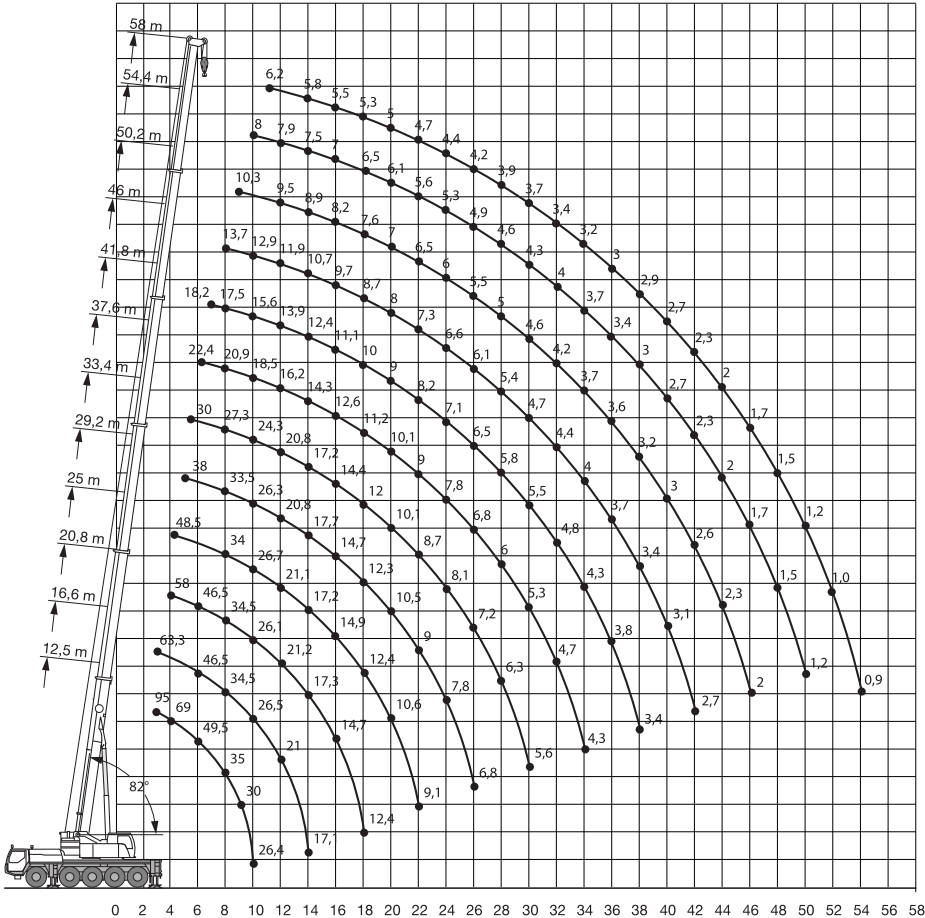
Standaardafmetingen
van de stempelschotten 2.5 x 1.5 m

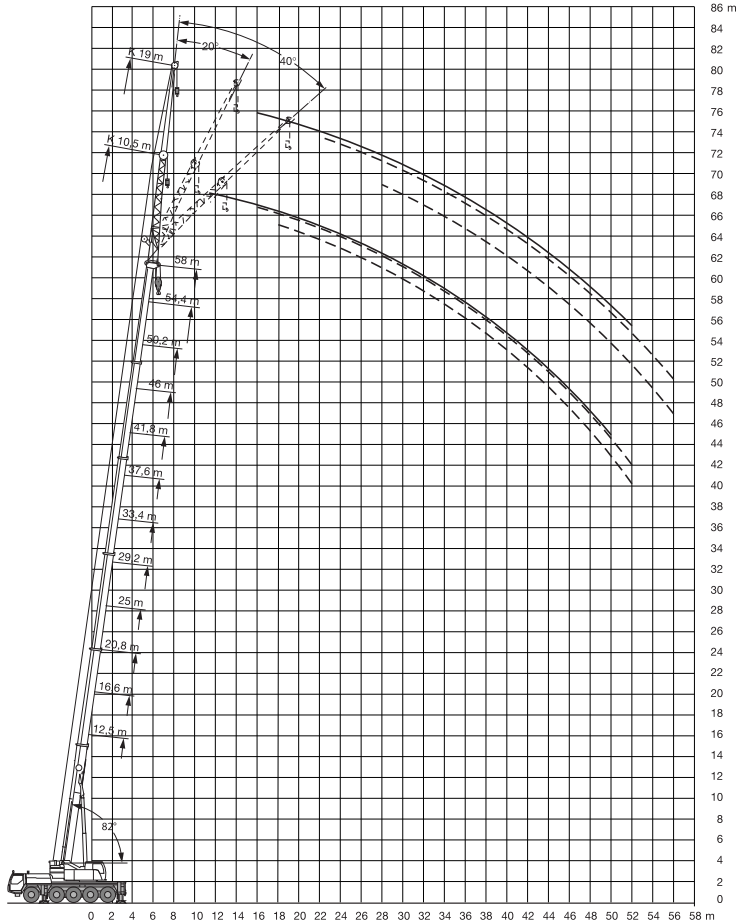
Gewicht van hijsblokken

60.5 T	5 schijfs	650 kg
40 T	3 schijfs	450 kg
16 T	1 schijfs	300 kg
6 T	Wartel	140 kg

Toelaatbare reeptrek

Hijsdraad doorsnede	17 mm
Capaciteit	5.7 ton





Mastlengte in meters		Vlucht in meters																				Ballast 23 ton																			
		4.0	5.0	6.0	7.0	8.0	9.0	10.0	11.0	12.0	14.0	16.0	18.0	20.0	22.0	24.0	26.0	28.0	30.0	32.0	34.0	36.0	38.0	40.0	42.0	44.0	46.0	48.0	50.0	52.0	54.0	56.0									
12.5 + 10.5 klapbij	0°	11.4	11.2	10.6	9.9	9.2	8.5	7.8	7.3	6.8	5.9	5.3	4.7	4.2																											
	20°		9.1	8.8	8.3	7.9	7.5	7.2	6.8	6.3	5.6	5.1	4.6	4.3																											
	40°				6.8	6.7	6.4	6.3	6.1	5.9	5.5	5.0	4.6																												
29.2 + 10.5 klapbij	0°		11.4	11.4	11.4	11.4	11.4	11.1	10.7	9.8	9.0	8.2	7.5	6.9	6.4	5.9	5.5	5.2	4.9	4.3	3.9																				
	20°					9.1	8.8	8.5	8.3	7.8	7.4	7.0	6.5	6.1	5.7	5.4	5.1	4.8	4.6	4.4	4.0																				
	40°							6.8	6.6	6.4	6.2	6.1	5.9	5.6	5.3	5.1	4.9	4.7	4.6	4.4	4.0																				
33.4 + 10.5 klapbij	0°		11.4	11.4	11.4	11.3	11.0	10.7	10.4	9.8	9.2	8.6	7.9	7.3	6.8	6.3	5.9	5.1	4.5	4.0	3.6	3.1	2.8																		
	20°						8.7	8.5	8.3	7.9	7.5	7.1	6.7	6.3	6.0	5.6	5.3	5.1	4.7	4.1	3.7	3.2	2.8																		
	40°							6.6	6.4	6.2	6.0	5.9	5.7	5.5	5.3	5.1	4.9	4.7	4.2	3.7																					
37.6 + 10.5 klapbij	0°		10.0	10.0	10.0	10.0	9.8	9.6	9.2	8.8	8.4	7.9	7.5	7.0	6.2	5.5	4.9	4.3	3.8	3.3	2.9	2.5	2.2	1.9																	
	20°						8.2	8.1	7.7	7.4	7.0	6.7	6.4	6.1	5.7	5.5	5.0	4.5	4.0	3.5	3.0	2.6	2.3	1.9																	
	40°							6.3	6.1	6.0	5.9	5.7	5.6	5.3	5.1	5.0	4.6	4.1	3.6	3.1	2.7																				
41.8 + 10.5 klapbij	0°				8.5	8.5	8.5	8.4	8.3	8.0	7.6	7.0	6.4	5.8	5.4	4.9	4.5	3.9	3.4	3.1	2.8	2.5	2.1	1.8	1.5	1.3															
	20°							7.5	7.3	7.0	6.8	6.6	6.2	5.8	5.4	4.9	4.5	4.2	3.7	3.2	2.9	2.6	2.3	1.9	1.6	1.4															
	40°							6.1	6.0	5.9	5.8	5.7	5.5	5.2	4.9	4.6	4.2	3.8	3.3	2.9	2.7	2.3	2.0																		
46.0 + 10.5 klapbij	0°					7.0	7.0	7.0	7.0	7.0	6.7	6.3	5.8	5.4	5.0	4.7	4.3	3.9	3.6	3.3	2.9	2.5	2.4	2.2	1.9	1.6	1.5	1.4	1.3												
	20°									6.7	6.4	6.0	5.6	5.2	4.9	4.5	4.2	3.9	3.6	3.3	3.1	2.7	2.4	2.3	2.0	1.7	1.6	1.5	1.3												
	40°										5.7	5.6	5.4	5.1	4.8	4.5	4.2	3.9	3.6	3.4	3.2	2.9	2.5	2.3	2.1	1.8	1.6														
50.2 + 10.5 klapbij	0°					5.1	5.1	5.1	5.1	5.1	5.0	4.9	4.6	4.3	4.0	3.8	3.5	3.3	3.1	2.9	2.7	2.6	2.3	2.0	1.9	1.8	1.5	1.3	1.1	0.9	0.7										
	20°									5.1	4.9	4.6	4.4	4.1	3.9	3.6	3.4	3.3	3.1	2.9	2.8	2.6	2.4	2.1	1.9	1.8	1.7	1.4	1.2	1.0	0.8										
	40°										4.5	4.2	4.0	3.8	3.6	3.4	3.3	3.1	2.9	2.8	2.6	2.5	2.2	1.9	1.8	1.7	1.4														
54.4 + 10.5 klapbij	0°						4.0	4.0	4.0	3.9	3.8	3.6	3.5	3.3	3.2	3.0	2.9	2.7	2.6	2.4	2.3	2.2	2.1	1.8	1.5	1.2	1.0														
	20°									3.9	3.7	3.6	3.4	3.2	3.1	2.9	2.8	2.7	2.5	2.4	2.3	2.2	2.1	2.0	1.7	1.4	1.1	0.9													
	40°										3.6	3.5	3.4	3.2	3.1	2.9	2.8	2.7	2.5	2.4	2.3	2.2	2.1	2.0	1.8	1.5	1.2	1.0													
58.0 + 10.5 klapbij	0°									3.2	3.2	3.2	3.1	3.0	2.9	2.7	2.6	2.4	2.3	2.2	2.1	2.0	1.8	1.7	1.4	1.2	1.0														
	20°										3.2	3.2	3.1	3.0	2.9	2.8	2.7	2.5	2.4	2.3	2.2	2.1	2.0	1.9	1.8	1.6	1.3	1.1	0.9												
	40°													3.1	3.0	2.9	2.8	2.7	2.5	2.4	2.3	2.2	2.1	2.0	1.9	1.8	1.7	1.4	1.2	1.0											

