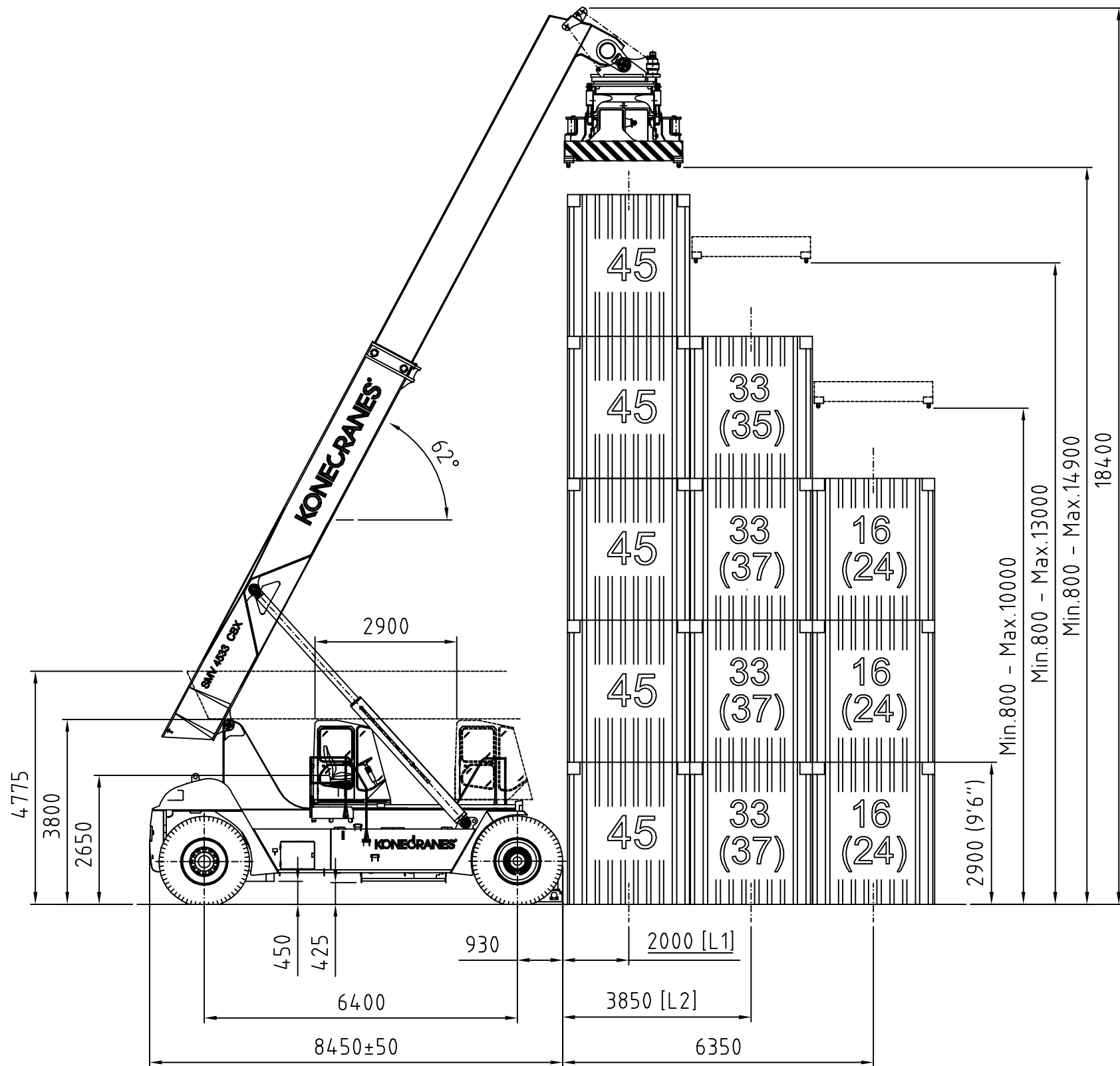


TECHNICAL DATA : SMV 4533 CCX5

LIFTING DATA Lift capacities (at load center LC1 / LC2 / LC3) Lift capacities (at load center LC1 / LC2 / LC3 at max lifting height) Lift capacities in trailer legs (at load center LC1) Load centers (LC1 / LC2 / LC3) Lifting speed, unloaded / at 40 % load / at rated load Lowering speed, unloaded / at rated load	kg kg kg mm m/s m/s	45 000 / 33 000 (37 000) / 16 000 (24 000) 45 000 / 33 000 (35 000) / 16 000 (24 000) 45000 2 000 / 3 850 / 6 350 0,38 / 0,35 / 0,23 0,35 / 0,4
DRIVING DATA Drive speed forward, unloaded / at rated load Drive speed reverse, unloaded / at rated load Incline (driving ability) at rated load at 0 km/h/at 2 km/h Towing (power ability) at rated load at 0 km/h/at 2 km/h	km/h km/h % kN	24 / 21 18 / 17 34 / 21 397 / 266
SERVICE WEIGHT / AXLE PRESSURE Service weight Axle pressure front at load center LC1, unloaded / at rated load Axle pressure front at load center LC2, unloaded / at rated load Axle pressure front at load center LC3, unloaded / at rated load Axle pressure rear at load center LC1, unloaded / at rated load Axle pressure rear at load center LC2, unloaded / at rated load Axle pressure rear at load center LC3, unloaded / at rated load Axle pressure in driving position, front/rear (at rated load)	kg kg kg kg kg kg kg kg	87 200 48 000 / 112 700 (44 500 / 102 500) 53 600 / 110 400 (49 600 / 106 600) 62 000 / 96 300 (57 100 / 103 100) 39 200 / 19 500 (42 700 / 29700) 33 600 / 9 800 (37 600 / 17 600) 25 200 / 6 900 (30 100 / 8 100) 103 100 / 29 100
ENGINE (electronic controlled) Engine make / model name Emission approval EU / US Monitoring / emission controlled / CanBus Fuel / type of engine / intercooler Power ISO 3046 / max speed Torque ISO 3046 / at speed Displacement / No. of cylinders / type Fuel consumption, normal driving Alternator, type/power / capacity Starting battery, voltage/capacity	kW / rpm Nm / rpm L L/h / W / Amp V / Ah	Volvo TAD-1171-VE Stage 4 / Tier 4f Yes / yes / yes Diesel / 4-stroke / yes 265 / 2 000 1 785 / 1 265 10,8 / 6 / Inline 15 – 18 AC / 3 080 / 110 2 x 12 / 140
TRANSMISSION (electronic controlled) Transmission make / model / amount of gears (forward /reverse) Monitoring / reverse protection / CanBus / Clutch, type Transmission type / type of shift gear		Dana TE-30 / 5 + 3 gears Yes / yes / yes / Torque converter Softshift – Powershift / Automatic
DRIVE AXLE & BRAKE SYSTEM Drive axle make / model name Drive axle type / drive axle width Driving brake system, type / affected wheels Parking brake system, type / affected wheels	/ mm	Kessler D102 Differential + hub reduction / 4 160 Oil cooled Wet Disc Brakes / drive wheels Dry disk brake / spring release / drive wheels
STEER AXLE & STEER SYSTEM Steer axle type / steering system		Double acting cylinder / hydraulic servo assisted
WHEELS Number of wheels, front + rear / type (*driven) Tire pressure front / rear Tire dimensions (Ply rating) front / rear Rim dimension front / rear	MPa Inch (No) Inch	4*+2 / pneumatic 1,0 / 1,0 18.00 x 33" (PR 36) / 18.00 x 33" (PR 40) 13.00 x 33" / 13.00 x 33"
HYDRAULIC SYSTEM Hydraulic pump make / model name Hydraulic system / pump type Power-on-demand / Low energy / Separate oil tanks Hydraulic oil pressure mast / spreader	MPa / MPa	Parker & Hannifin / P2-series Load sensing system / variable piston pump Yes / yes / hydraulics & brakes 24 / 15
TANK VOLUMES Diesel tank volume Hydraulic tank volume	L L	650 850
LIFT EQUIPMENT & SPREADER Spreader make / type Spreader functions Spreader locking containers + trailer / lifting eyes Sideshift stroke / rotation / pile slope type (pile slope stroke)	mm/deg/deg	ELME 817-MPS / Combilift (container & trailer) 20-30-35-40 ft containers / trailer bottom lift 4 x top twist locks / 4 corners ± 800 / +195 : -105 / Hydraulic HPS (±2,0)
OTHERS Safety, Monitoring & overload system / programmable / colour Hydraulic sliding cabin / stroke Noise level (inside Cab / Lm) DIN 45635 Noise level (inside Cab/ LpAZ) EN 12053 Noise level (outside at 7 m/ Lwa) 2005/88/EC	/ mm dB(A) dB(A) dB(A)	Electronic system EMC / yes / yes Yes / 1 800 (Stepless) 66 75 111
NORMS & STANDARDS Machine Directive in Europe Stability of Container Handling Trucks Safety of Industrial trucks	2006 / 42 / EC ISO 13562 EN 1459:1998	Yes Yes Yes

This document is the property of Konecranes Lifftrucks AB, and must not without our written approval be copied or imparted to a third party. Contravention will be prosecuted.



A3

Ref. No.	Revision not.	Date	Inf.	Sign.

Pos.	No.	Name				Material	Part no
View		Sharp edges broken	Designed by RP	Drawn by RP	Appr. by RP	Date 110313	Scale 1:100
		Name SMV4533CBX5 SPEC. WB.6400				Weight, kg	Replaced by no.
KONECRANES						Drawing no 851450	Revision 1