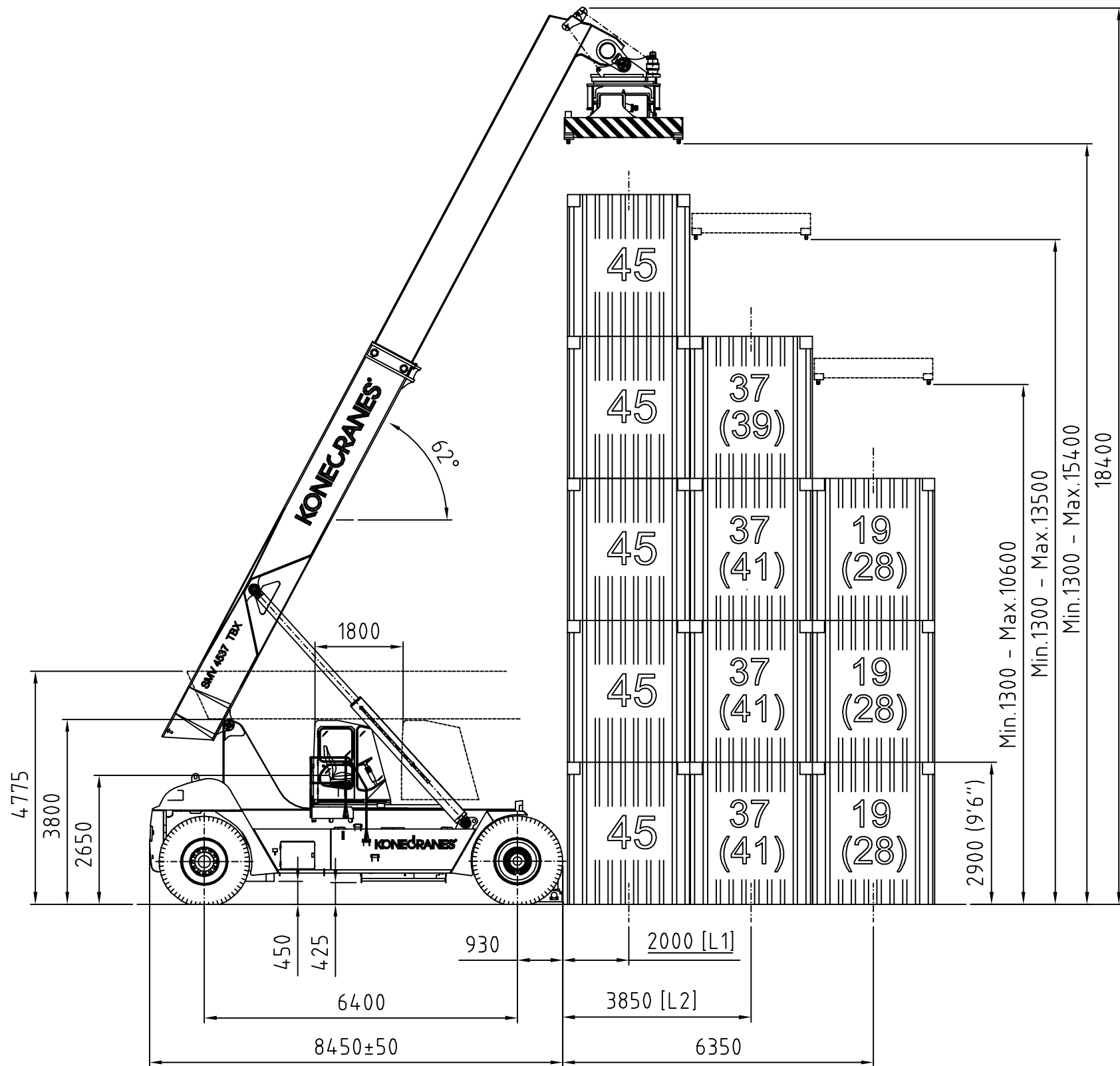


TECHNICAL DATA : SMV 4537 TC5

LIFTING DATA Lift capacities (at load center LC1 / LC2 / LC3) Lift capacities (at load center LC1 / LC2 / LC3 at max lifting height) Load centers (LC1 / LC2 / LC3) Lifting speed, unloaded / at 40 % load / at rated load Lowering speed, unloaded / at rated load	kg kg mm m/s m/s	45 000 / 37 000 / 19 000 45 000 / 37 000 / 19 000 1 900 / 3 850 / 6 350 0,38 / 0,35 / 0,23 0,35 / 0,4
DRIVING DATA Drive speed forward, unloaded / at rated load Drive speed reverse, unloaded / at rated load Incline (driving ability) at rated load at 0 km/h/at 2 km/h Towing (power ability) at rated load at 0 km/h/at 2 km/h	km/h km/h % kN	24 / 21 18 / 17 34 / 21 397 / 266
SERVICE WEIGHT / AXLE PRESSURE Service weight Axle pressure front at load center LC1, unloaded / at rated load Axle pressure front at load center LC2, unloaded / at rated load Axle pressure front at load center LC3, unloaded / at rated load Axle pressure rear at load center LC1, unloaded / at rated load Axle pressure rear at load center LC2, unloaded / at rated load Axle pressure rear at load center LC3, unloaded / at rated load Axle pressure in driving position, front/rear (at rated load)	kg kg kg kg kg kg kg kg	83 000 42 000 / 106 700 46 500 / 110 100 53 200 / 93 900 41 000 / 21 300 36 500 / 9 900 29 800 / 8 100
ENGINE (electronic controlled) Engine make / model name Emission approval EU / US Monitoring / emission controlled / CanBus Fuel / type of engine / intercooler Power ISO 3046 / max speed Torque ISO 3046 / at speed Displacement / No. of cylinders / type Fuel consumption, normal driving Alternator, type/power / capacity Starting battery, voltage/capacity	kW / rpm Nm / rpm L L/h / W / Amp V / Ah	Volvo TAD-1171-VE Stage 4 / Tier 4f Yes / yes / yes Diesel / 4-stroke / yes 265 / 2 100 1 785 / 1 265 10,8 / 6 / Inline 15 – 18 AC / 3 080 / 110 2 x 12 / 140
TRANSMISSION (electronic controlled) Transmission make / model / amount of gears (forward /reverse) Monitoring / reverse protection / CanBus / Clutch, type Transmission type / type of shift gear		Dana TE-30 / 5 + 3 gears Yes / yes / yes / Torque converter Softshift – Powershift / Automatic
DRIVE AXLE & BRAKE SYSTEM Drive axle make / model name Drive axle type / drive axle width Driving brake system, type / affected wheels Parking brake system, type / affected wheels	/ mm	Kessler D102 Differential + hub reduction / 4 160 Oil cooled Wet Disc Brakes / drive wheels Dry disc brake / spring release / drive wheels
STEER AXLE & STEER SYSTEM Steer axle type / steering system		Double acting cylinder / hydraulic servo assisted
WHEELS Number of wheels, front + rear / type (*driven) Tire pressure front / rear Tire dimensions (Ply rating) front / rear Rim dimension front / rear	MPa Inch (No) Inch	4*+2 / pneumatic 1,0 / 1,0 18.00 x 33" (PR 36) / 18.00 x 33" (PR 40) 13.00 x 33" / 13.00 x 33"
HYDRAULIC SYSTEM Hydraulic pump make / model name Hydraulic system / pump type Power-on-demand / Low energy / Separate oil tanks Hydraulic oil pressure mast / spreader	MPa / MPa	Parker & Hannifin / P2-series Load sensing system / variable piston pump Yes / yes / hydraulics & brakes 24 / 15
TANK VOLUMES Diesel tank volume Hydraulic tank volume	L L	650 850
LIFT EQUIPMENT & SPREADER Spreader make / type Spreader functions Spreader locking containers / lifting eyes Sideshift stroke / rotation / pile slope type (pile slope stroke)	mm / deg /	ELME 817-MPS / Toplift (container) 20-40 ft containers 4 x top twist locks / 4 x in corners ± 800 / +195 : -105 / Manual MPS / (± 2,0)
OTHERS Safety, Monitoring & overload system / programmable / colour Manual sliding cabin / stroke Noise level (inside Cab / Lm) DIN 45635 Noise level (inside Cab/ LpAZ) EN 12053 Noise level (outside at 7 m/ Lwa) 2005/88/EC	/ mm dB(A) dB(A) dB(A)	Electronic system EMC / yes / yes Yes / 1 800 66 75 111
NORMS & STANDARDS Machine Directive in Europe Stability of Container Handling Trucks Safety of Industrial trucks	2006 / 42 / EC ISO 13562 EN 1459:1998	Yes Yes Yes

This document is the property of Konecranes Lifftrucks AB, and must not without our written approval be copied or imparted to a third party. Contravention will be prosecuted.



Pos.	No.	Name				Material	Part no	
View		Sharp edges broken	Designed by	Drawn by	Appr. by	Date	Scale	Replace no.
E			RP	RP	RP	110313	1:100	
		Name				Weight, kg	Replaced by no.	
		KONECRANES SMV4537TBX5 SPEC. WB.6400				Drawing no	Revision	
						851449	1	

A3

Ref. No.	Revision not.	Date	Inf.	Sign.